

Funi in acciaio inox AISI 316

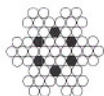
Stainless steel wire rope AISI 316

1x19 (spiroidale) . 1x19 (spiral)



RIF. ART.	FUNE WIRE ROPE	CAR. ROTT. B. LOAD	PESO WEIGHT
109100	mm 1,0	Min. Kg 99	Kg 0,49 mt 100
109101	1,5	190	1,11
109102	2	337	1,98
109103	3	757	4,46
109104	4	1.350	7,93
109105	5	2.100	12,4
109106	6	3.030	17,8
109107	7	3.850	24,3
109108	8	5.040	31,7
109110	10	7.870	49,5
109112	12	10.600	71,3
109114	14	13.400	97,1
109116	16	17.940	127
109119	19	23.751	176
109120	22	30.479	236
109121	26	42.405	330

7x7 (49 fili) . 7x7 (49 wires)



RIF. ART.	FUNE WIRE ROPE	CAR. ROTT. B. LOAD	PESO WEIGHT
109123	mm 0,45	Min. Kg 11	Kg 0,011 mt 100
109124	0,72	30	0,025
109125	0,81	37	0,03
109126	1	60	0,07
109127	1,5	128	0,08
109128	2	228	1,54
109129	3	513	3,46
109130	4	912	6,14
109131	5	1.430	9,6
109132	6	2.050	13,8
109133	8	3.650	24,6
109134	10	5.700	38,4
109135	12	7.860	57
109136	14	10.800	78
109137	16	14.000	105

7x19 (133 fili) . 7x19 (133 wires)

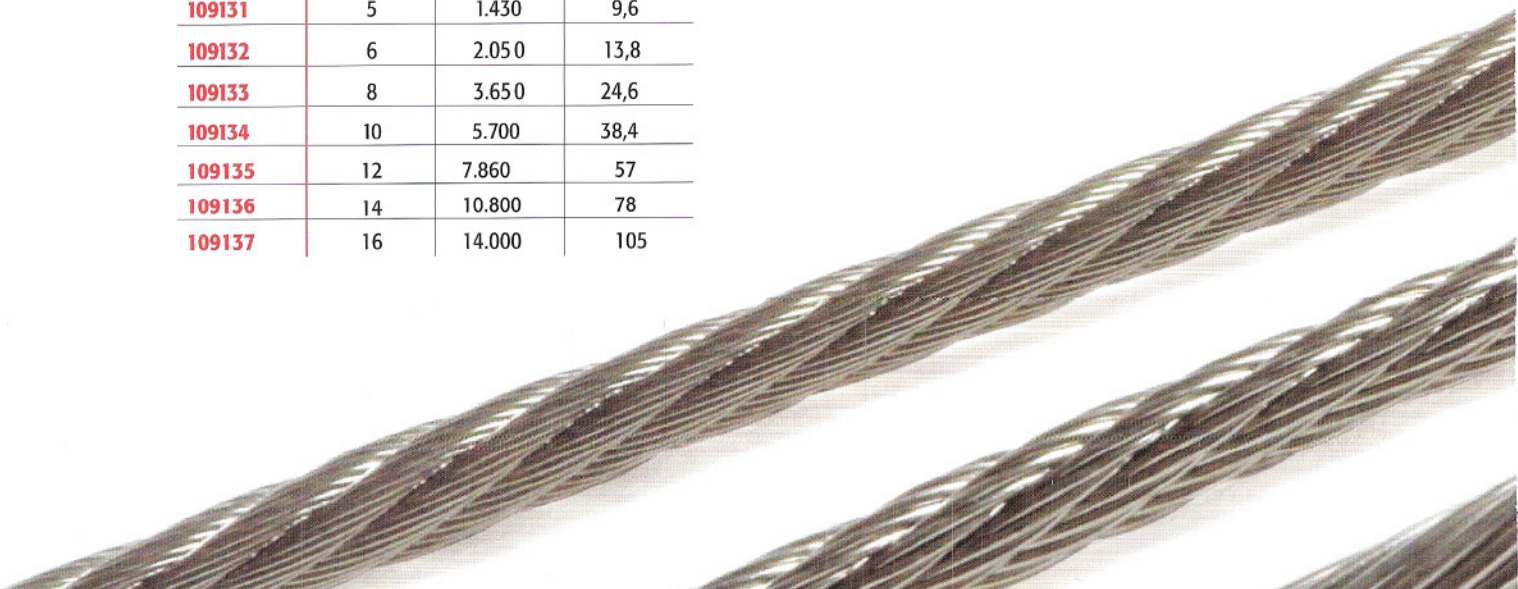


RIF. ART.	FUNE WIRE ROPE	CAR. ROTT. B. LOAD	PESO WEIGHT
109142	mm 2	Min. Kg 212	Kg 1,49 mt 100
109143	3	478	3,35
109144	4	850	5,95
109145	5	1.330	9,3
109146	6	1.920	13,4
109147	7	2.600	18,2
109148	8	3.410	23,8
109150	10	5.310	37,2
109151	12	7.660	53,6
109152	14	10.100	72,9
109153	16	13.600	95,5

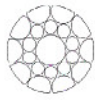
Rivestito PVC bianco (19 fili) . White-PVC covered (19 wires)



RIF. ART.	FUNE WIRE ROPE	CAR. ROTT. B. LOAD	PESO WEIGHT
109162	mm 3 x 5	Min. Kg 513	Kg 5,5 mt 100
109163	3 x 6	513	6,1
109164	4 x 7	912	10,8
109165	4 x 8	912	12
109166	6 x 9	2.050	21,5



Fune compattata (spiroidale) . Compact wire rope (spiral)



RIF. ART.	FUNE WIRE ROPE	CAR. ROTT. B. LOAD	PESO WEIGHT
109189	mm 3	Min. Kg 1.000	Kg 4,9 mt 100
109190	4	1.780	9,1
109193	5	2.600	14,2
109194	6	3.600	20,5
109195	7	5.000	27,9
109196	8	6.300	36,5
109197	10	10.000	57

6x36 + A.M. (265 fili) . 6x36 + A.M. (265 wires)



RIF. ART.	FUNE WIRE ROPE	CAR. ROTT. B. LOAD	PESO WEIGHT
109168	mm8	Min. Kg 3.641	Kg 26 mt 100
109169	10	5.700	40,9
109170	12	8.210	58,9
109171	14	11.200	80,2
109172	16	14.600	105
109173	18	18.500	133
109174	20	22.800	164
109175	22	27.600	198
109176	24	32.800	236

Fune Klearar . Klearar rope



RIF. ART.	FUNE WIRE ROPE	CAR. ROTT. B. LOAD	PESO WEIGHT
109265	mm 7,5	Min. Kg 2.100	Kg/mt 0,045
109266	9	3.030	0,065
109267	10	3.850	0,079
109268	11	5.040	0,098
109269	12,5	7.870	0,119

Fune Parafil . Parafil rope



RIF. ART.	FUNE WIRE ROPE	CAR. ROTT. B. LOAD	PESO WEIGHT
109207	mm 7	Min. Kg 500	Kg/mt 0,041
109209	8,5	1.000	0,059
109211	11	2.000	0,098

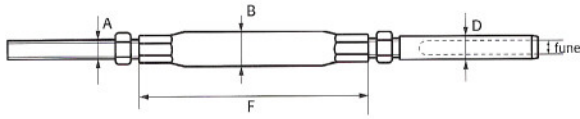


 Settore Architettura
Architectural sector

 Settore Industria
Industrial sector

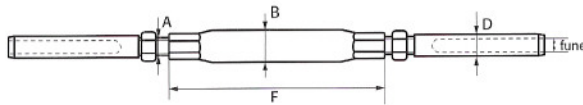
 Settore Navale
Nautical sector

Tenditori asta filettata/pressare "ribassati", inox AISI 316
Stainless steel thread/swage "small-type" turnbuckles, AISI 316



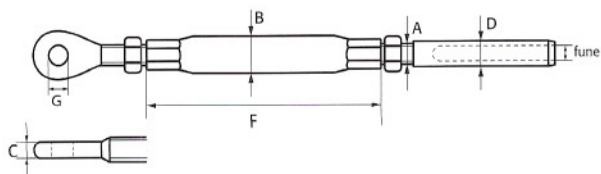
RIF. ART.	FUNE ROPE	A	B	D	F
101070	3	M5	9	6,3	60
101071	4	M6	10	6	73
101072	4	M6	10	6,3	73
101073	4	M6	10	9	73
101074	5	M6	10	8	73
101075	6	M6	10	9	73
101076	5	M8	13	7,5	92
101077	5	M8	13	8	92
101078	5	M8	13	9	92
101079	6	M8	13	9	92
101080	6	M10	16,5	9	102
101081	6	M10	16,5	10	102
101082	8	M10	16,5	12,5	102
101083	8	M12	20	12	126
101084	8	M12	20	12,5	126

Tenditori pressare/pressare "ribassati", inox AISI 316
Stainless steel swage/swage "small-type" turnbuckles, AISI 316



RIF. ART.	FUNE ROPE	A	B	D	F
101100	3	M5	9	6,3	60
101101	4	M6	10	6	73
101102	4	M6	10	6,3	73
101103	4	M6	10	9	73
101104	5	M6	10	8	73
101105	6	M6	10	9	73
101106	5	M8	13	7,5	92
101107	5	M8	13	8	92
101108	5	M8	13	9	92
101109	6	M8	13	9	92
101110	6	M10	16,5	9	102
101111	6	M10	16,5	10	102
101112	8	M10	16,5	12,5	102
101113	8	M12	20	12	126
101114	8	M12	20	12,5	126

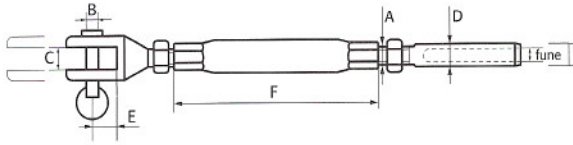
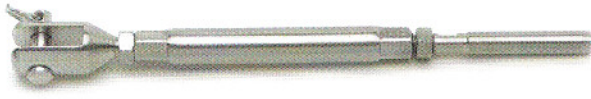
Tenditori occhio/pressare "ribassati", inox AISI 316
Stainless steel eye/swage "small-type" turnbuckles, AISI 316



RIF. ART.	FUNE ROPE	A	B	C	D	F	G
101120	3	M5	9	4	6,3	60	5,5
101121	4	M6	10	4	6	73	5,5
101122	4	M6	10	4	6,3	73	5,5
101123	4	M6	10	4	9	73	5,5
101124	5	M6	10	4	8	73	5,5
101125	6	M6	10	4	9	73	5,5
101126	5	M8	13	6	7,5	92	6,5
101127	5	M8	13	6	8	92	6,5
101128	5	M8	13	6	9	92	6,5
101129	6	M8	13	6	9	92	6,5
101130	6	M10	16,5	7	9	102	8,5
101131	6	M10	16,5	7	10	102	8,5
101132	8	M10	16,5	7	12,5	102	8,5
101133	8	M12	20	9	12	126	10,5
101134	8	M12	20	9	12,5	126	10,5

Tenditori forcella fresata/pressare "ribassati", inox AISI 316

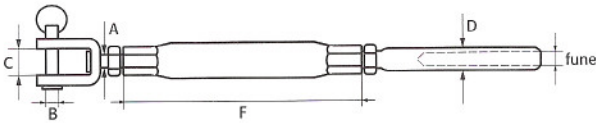
Stainless steel fork/swage "small-type" turnbuckles, AISI 316



RIF. ART.	FUNE ROPE	A	B	C	D	E	F
101000	3	M5	4	5	6	9	60
101001	3	M5	4	5	6,3	9	60
101002	4	M6	5	6	6	11	73
101003	4	M6	5	6	6,3	11	73
101004	4	M6	5	6	9	11	73
101005	5	M6	5	6	8	11	73
101006	6	M6	5	6	9	11	73
101007	5	M8	6	8	8	13	92
101008	5	M8	6	8	9	13	92
101009	6	M8	6	8	9	13	92
101010	6	M10	8	8	9	17	102
101011	6	M10	8	8	10	17	102
101012	8	M12	10	10	12	18	126
101013	8	M12	10	10	12,5	18	126
101014	10	M14	12	12	16	21	145

Tenditori forcella saldata/pressare "ribassati", inox AISI 316

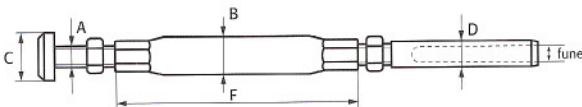
Stainless steel welded fork/swage "small-type" turnbuckles, AISI 316



RIF. ART.	FUNE ROPE	A	B	C	D	F
101020	3	M5	5	8	6,3	55
101021	4	M6	6	8	6	65
101022	5	M8	8	10	8	70
101023	6	M10	10	12	12,5	85
101024	8	M12	11,5	12	12,5	150

Tenditori a testa battente/pressare "ribassati", inox AISI 316

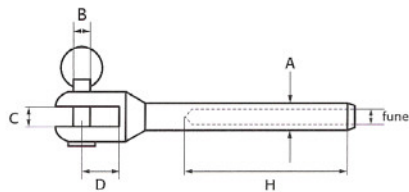
Stainless steel dome head/swage "small-type" turnbuckles AISI 316



RIF. ART.	FUNE ROPE	A	B	C	D	F
101040	3	M5	9	9	6,3	60
101041	4	M6	10	10,5	6	73
101042	4	M6	10	10,5	6,3	73
101043	4	M6	10	10,5	9	73
101044	5	M6	10	10,5	8	73
101045	6	M6	10	10,5	9	73
101046	5	M8	13	14	7,5	92
101047	5	M8	13	14	8	92
101048	5	M8	13	14	9	92
101049	6	M8	13	14	9	92
101050	6	M10	16,5	16	9	102
101051	6	M10	16,5	16	10	102
101052	8	M10	16,5	16	12,5	102
101053	8	M12	20	18,5	12	126
101054	8	M12	20	18,5	12,5	126

Terminali a forcella fresata "ribassati", inox AISI 316

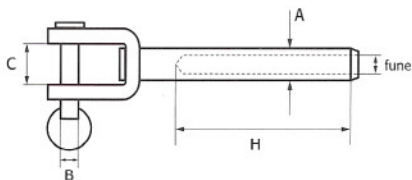
Stainless steel "small-type" fork terminals, AISI 316



RIF. ART.	FUNE ROPE	A	B	C	D	H
101180	3	6,3	5	6	11	30
101181	4	6	5	6	11	30
101182R	4	6,3	5	6	11	30
101183	4	8	5	6	11	30
101184XR	5	8	5	6	11	30
101185XXR	6	9	5	6	11	30
101186	5	8	6	8	13	40
101187	5	9	6	8	13	40
101188	6	9	6	8	13	40
101189	6	9	8	8	17	50
101190	6	10	8	8	17	50
101191	8	12	8	8	17	50
101192	8	12	10	10	19	60
101193	8	12,5	10	10	19	60

Terminali a forcella saldata "ribassati", inox AISI 316

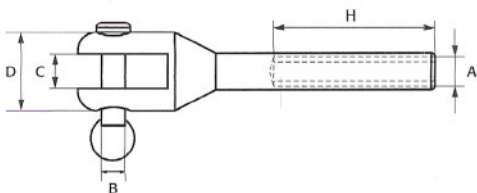
Stainless steel welded "small-type" fork terminals, AISI 316



RIF. ART.	FUNE ROPE	A	B	C	H
101200	3	6,3	5	8	18
101201	4	7,5	6	8	24
101202	5	9	8	10	30
101203	6	12,5	10	12	36
101204	8	12,5	11,5	12	60

Forcella fresata filettata femmina standard, inox AISI 316

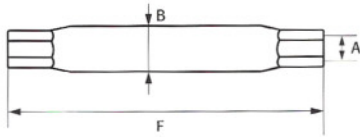
Stainless steel medium internal threaded fork terminal, AISI 316



ART. DX ART. RIGHT	ART. SX ART. LEFT	A	B	C	D	H
101220DX	101220SX	M6	5	5	14	25
101221DX	101221SX	M8	6	7	18	30
101222DX	101222SX	M10	10	10	25	40

Canaula standard, inox AISI 316

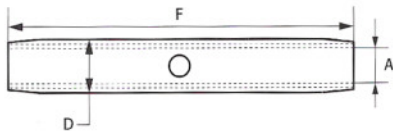
Stainless steel standard body, AISI 316



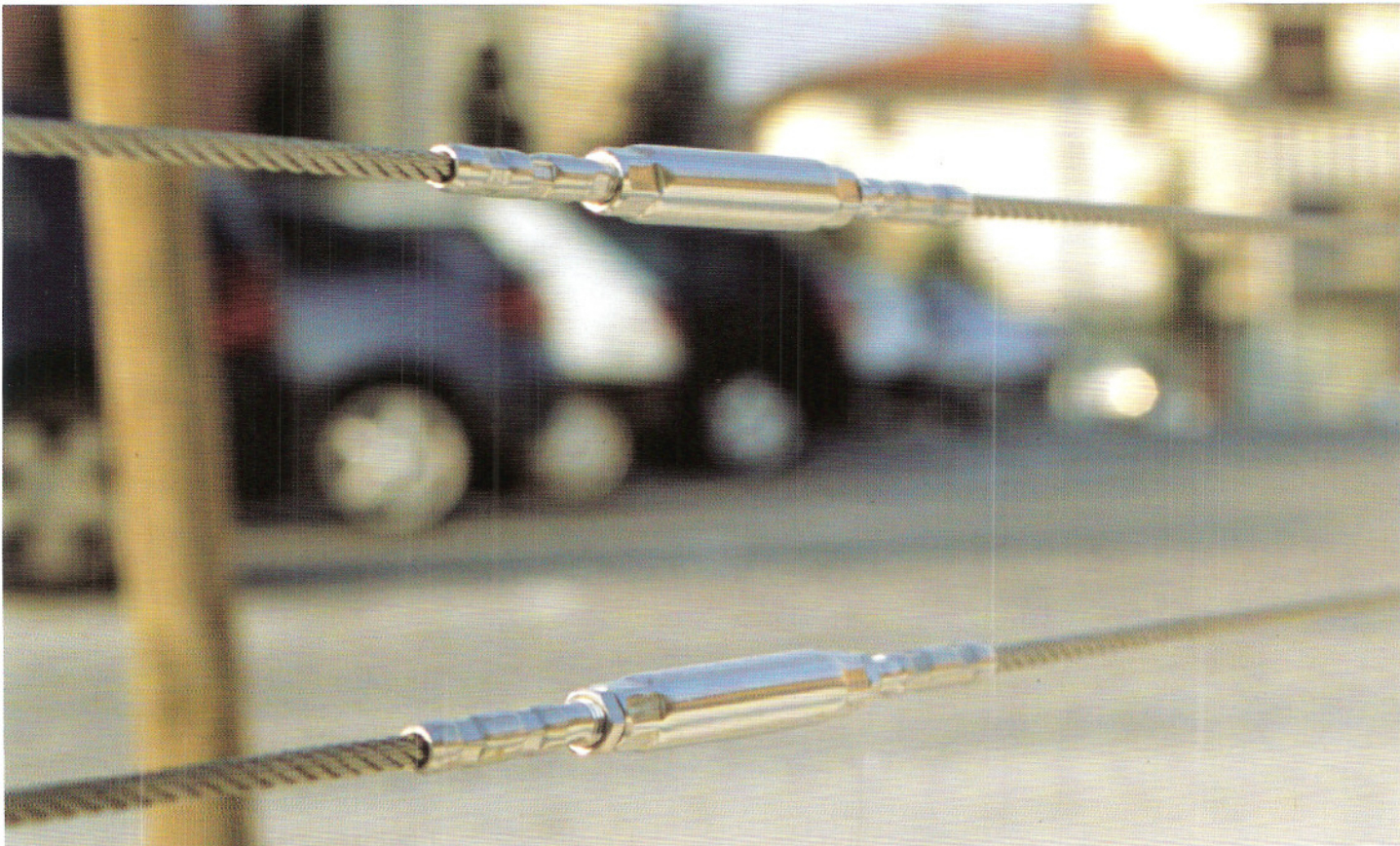
RIF. ART.	A	B	F
101140	M5	9	60
101141	M6	10	73
101142	M8	13	92
101143	M10	16,5	102
101144	M12	20	126
101145	M14	21,5	145
101146	M16	25,5	165
101147	M18	29	190
101148	M20	32	215

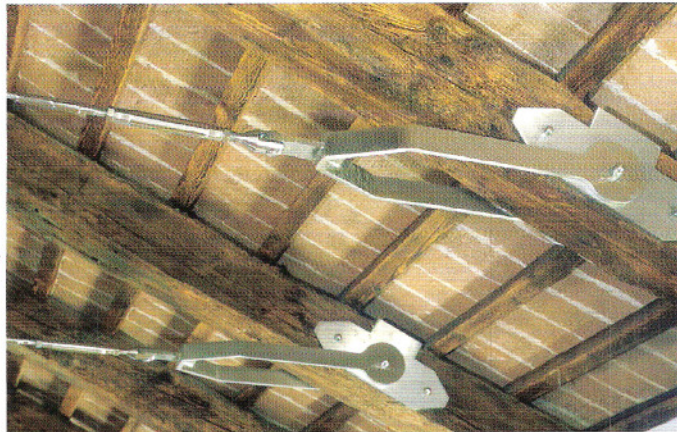
Canaula conica con foro, tipo corto, inox AISI 316

Stainless steel short conical body with hole, AISI 316

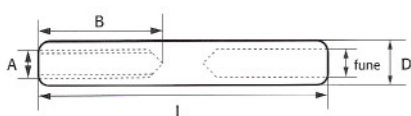


RIF. ART.	A	D	F
101160	M5	8	55
101161	M6	9	64
101162	M8	12	79
101163	M10	14	89



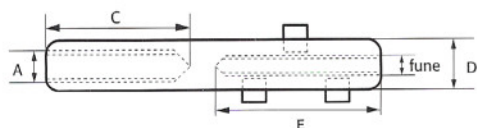


Terminali filettati femmina "ribassati", inox AISI 316
 Stainless steel "small-type" internal threaded terminal, AISI 316



ART. DX ART. RIGHT	ART. SX ART. LEFT	FUNE ROPE	A	B	D	L
101320DX	101330SX	3	M5	20	6,3	55
101321DX	101331SX	4	M6	25	7,5	60
101322DX	101332SX	5	M6	25	8	60
101323DX	101333SX	6	M6	30	9	68
101324DX	101334SX	6	M8	30	12,5	85
101325DX	101335SX	6	M10	30	14	105
101326DX	101336SX	8	M12	30	16	120

Terminali filettati femmina manuali con grani, inox AISI 316
 Stainless steel manual internal threaded terminal with grub screws, AISI 316

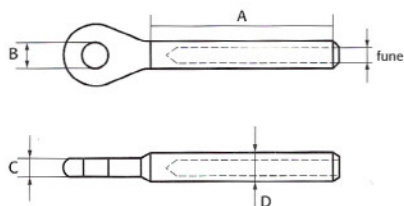


RIF. ART.	FUNE ROPE	A	C	D	E
101340	3	M6	30	12	45
101341	4	M6	30	12	45
101342	5	M8	40	14	50
101343	6	M8	40	14	60

Validi solamente per fune tipo 7x7 e 7x19
 Only valid for wire rope type 7x7 and 7x19

Terminali ad occhio "ribassati", inox AISI 316

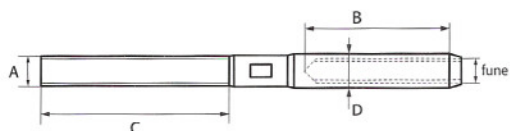
Stainless steel "small-type" eye terminals, AISI 316



RIF. ART.	FUNE ROPE	A	B	C	D
101240	3	25	5,5	4	6
101241	3	25	5,5	4	6,3
101242	4	30	5,5	4	6
101243	4	30	5,5	4	6,3
101244	4	30	5,5	4	9
101245	5	30	5,5	4	8
101246	6	30	5,5	4	9
101247	5	40	6,5	6	7,5
101248	5	40	6,5	6	8
101249	6	50	8,5	7	9
101250	6	50	8,5	7	10

Terminali filettati "ribassati", inox AISI 316

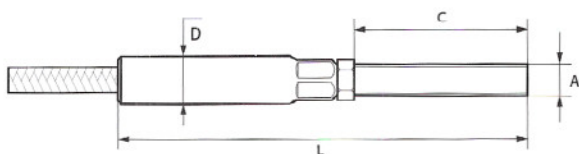
Stainless steel "small-type" threaded terminals, AISI 316



ART. DX ART. RIGHT	ART. SX ART. LEFT	FUNE ROPE	A	B	C	D
101270DX	101270SX	3	M5	25	30	6
101271DX	101271SX	4	M6	30	40	6
101272DX	101272SX	4	M6	30	40	6,3
101273DX	101273SX	4	M6	30	40	9
101274DX	101274SX	5	M6	30	40	8
101275DX	101275SX	6	M6	30	40	9
101276DX	101276SX	5	M8	40	50	8
101277DX	101277SX	5	M8	40	50	9
101278DX	101278SX	6	M8	40	50	9
101279DX	101279SX	6	M10	50	60	9
101280DX	101280SX	6	M10	50	60	10
101281DX	101281SX	8	M10	50	60	12,5
101282DX	101282SX	8	M12	60	70	12
101283DX	101283SX	8	M12	60	70	12,5
101284DX	101284SX	10	M14	70	80	16
101285DX	101285SX	10	M16	80	90	16

Terminali filettati maschi manuali lineari, inox AISI 316

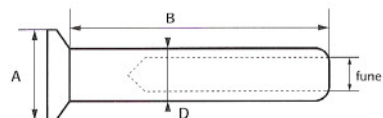
Stainless steel "new type" manual threaded terminals, AISI 316



RIF. ART.	FUNE ROPE	A	C	D	L
101300	3	M6	40	10	90
101301	4	M6	40	10	90
101302	5	M8	55	13	130
101303	6	M8	55	13	130

Terminali a testa svasata, inox AISI 316

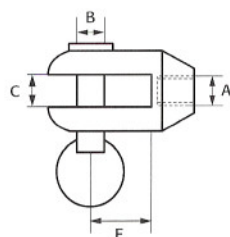
Stainless steel cone head terminals, AISI 316



RIF. ART.	FUNE ROPE	A	B	D
101400	3	8	27	6
101401	3	8	27	6,3
101402	4	8	30	6
101403	4	8	30	6,3
101404	4	9,5	35	7,5
101405	5	9,5	35	7,5
101406	5	13	40	8
101407	5	13	40	9
101408	6	13	40	9
101409	8	16	50	12

Forcella fresata filettata internamente tipo corto, inox AISI 316

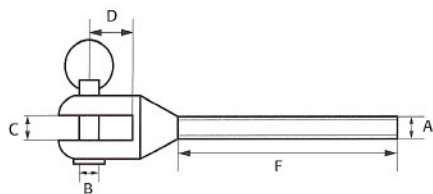
Stainless steel short type internal threaded fork terminal, AISI 316



RIF. ART.	A	B	C	E
101420	M5	5	5	11
101421	M6	6	6	11
101422	M8	8	8	13
101423	M10	10	10	17
101424	M12	12	12	18

Tirante a forcella fresata con gambo filettato, inox AISI 316

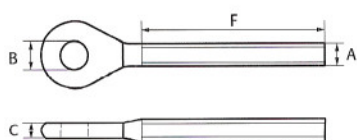
Stainless steel threaded fork terminal, AISI 316



ART. DX ART. RIGHT	ART. SX ART. LEFT	A	B	C	D	F
101440DX	101440SX	M5	4	5	11	30
101441DX	101441SX	M6	5	5	11	40
101442DX	101442SX	M8	6	7	13	48
101443DX	101443SX	M10	8	8	17	55
101444DX	101444SX	M12	10	10	18	65

Tirante ad occhio con gambo filettato, inox AISI 316

Stainless steel threaded eye terminal, AISI 316

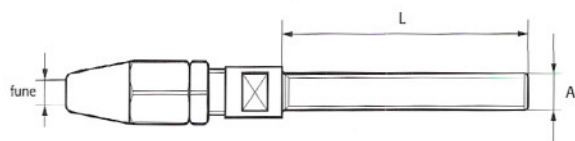


ART. DX ART. RIGHT	ART. SX ART. LEFT	A	B	C	F
101460DX	101460SX	M5	5	4	25
101461DX	101461SX	M6	5,5	4	33
101462DX	101462SX	M8	6,5	6	44
101463DX	101463SX	M10	8,5	7	54
101464DX	101464SX	M12	10,5	9	64

Terminali filettati maschi manuali conici, inox AISI 316

Stainless steel swageless threaded terminals, AISI 316

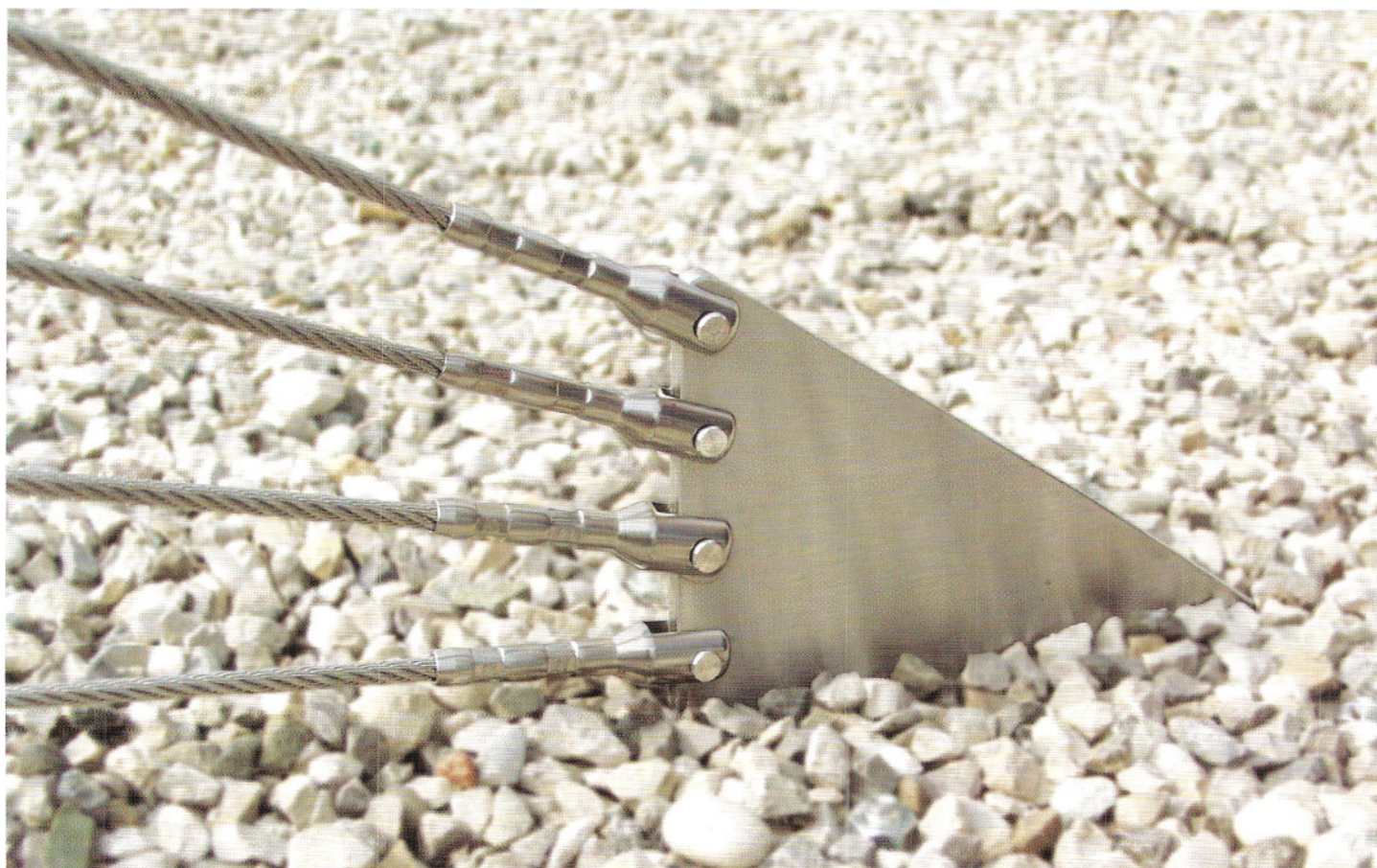
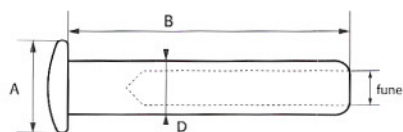
RIF. ART.	FUNE ROPE	A	L
101360	3	M6	40
101361	4	M8	50
101362	5	M10	60
101363	6	M12	70
101364	7	M14	80
101365	8	M16	90



Terminali a testa battente, inox AISI 316

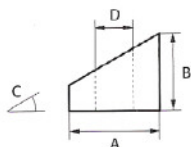
Stainless steel dome head terminals, AISI 316

RIF. ART.	FUNE ROPE	A	B	D
101380	3	9	18	5,5
101381	3	9	25	6
101382	4	9	25	6
101383	4	11	25	6,3
101384	5	13	28	7,5
101385	5	14	35	8
101386	5	14	35	9
101387	6	14	40	9
101388	8	16	50	12



Rondella inclinata a 30° per piatto/tubo, inox AISI 316

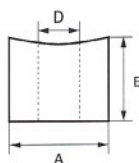
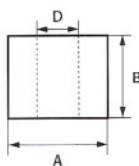
Stainless steel 30° angular washer for flat/tube, AISI 316



ART. PIATTO PLANE	ART. TUBO TUBE	D	A	B	C
101560P	101560T	M6	12	6,5	30°
101561P	101561T	M8	16	8,5	30°
101562P	101562T	M10	20	10,5	30°
101563P	101563T	M12	22	12,5	30°

Rondella dritta per tubo, inox AISI 316

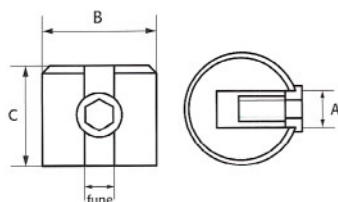
Stainless steel straight washer, AISI 316



ART. PIATTO PLANE	ART. TUBO TUBE	D	A	B
101580P	101580T	M6	12	10
101581P	101581T	M8	16	10
101582P	101582T	M10	20	15
101583P	101583T	M12	22	16

Cilindri di fermo ad un grano, inox AISI 316

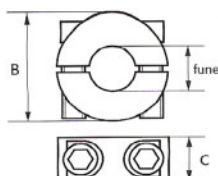
Stainless steel stoppers for wire rope, AISI 316



RIF. ART.	FUNE ROPE	A	B	C
101600	1	M5	9	7
101601	2	M6	10	8
101602	3-4	M8	15	12
101603	5-6	M10	20	15

Rondelle di fermo su fune, inox AISI 316

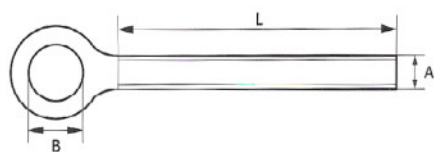
Stainless steel wire rope clamp rings, AISI 316



RIF. ART.	FUNE ROPE	B	C
101620	Ø 3	16	10
101621	Ø 4	16	10
101622	Ø 5	20	10
101623	Ø 6	20	10

Tiranti ad occhio stampati, inox AISI 316

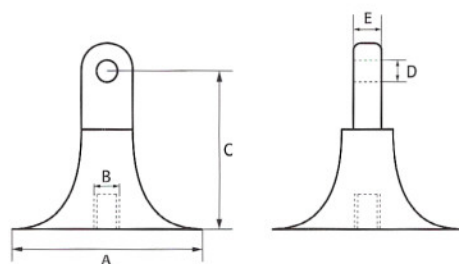
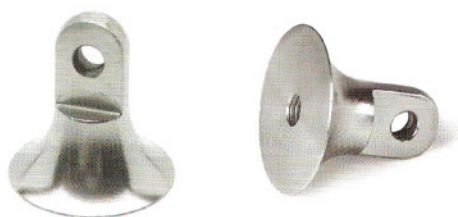
Stainless steel forged eye bolts, AISI 316



RIF. ART.	A	B	L
101480	M5	9	39
101481	M6	11	51
101482	M8	13	63
101483	M10	16	74
101484	M12	20	117

Attacco a campanella, inox AISI 303/304

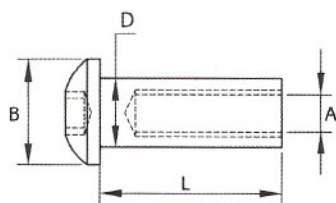
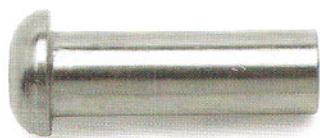
Stainless steel bell joint, AISI 303/304



RIF. ART.	A	B	C	D	E
101500/303	30	M6	22	6	4
101501/304	30	M6	22	6	4

Tirante a testa a battente filettato femmina dx, esagono incassato, inox AISI 304

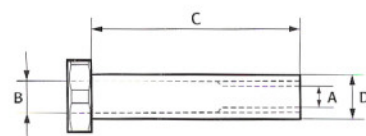
Stainless steel socket hexagon dome head internal right-hand thread, AISI 304



RIF. ART.	A	B	D	L
101520	M6	10	8	26
101521	M8	12	10	30
101522	M10	14	12	34

Tirante a testa battente, filettato femmina, foro passante, inox AISI 316

Stainless steel dome head internal thread (through hole), AISI 316



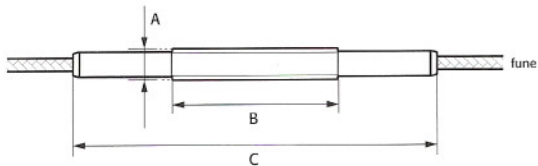
RIF. ART.	A	B	C	D
101540	M5	5,3	30	7
101541	M6	6,3	35	8
101542	M8	8,3	40	10,5



Terminale di fermo filettato esternamente, inox AISI 316

Stainless steel stopper middle external threaded terminal, AISI 316

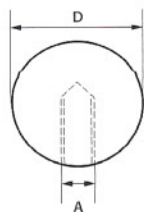
RIF. ART.	FUNE ROPE	A	B	C
101700	Ø 3	M8	40	90
101701	Ø 4	M10	50	110
101702	Ø 5	M12	60	130



Sfera filettata internamente, inox AISI 316

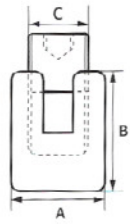
Stainless steel ball dome cap nut, AISI 316

RIF. ART.	A	D
101720	M6	20
101721	M6	25
101722	M8	40
101723	M8	50



Cilindro di fermo per incrocio funi, inox AISI 316

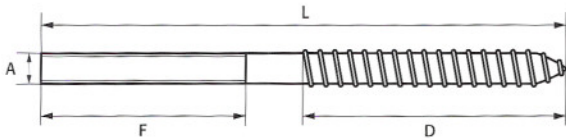
Stainless steel cross clip with screw, AISI 316



RIF. ART.	FUNE ROPE	A	B	C
101640	3	20	19	M12
101641	4	20	21	M12
101642	5	20	23	M12
101643	6	20	25	M12

Asta filettata destra con vite a legno/tasselli, inox AISI 316

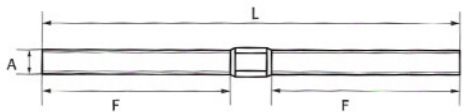
Stainless steel dowel screw with right-hand threaded stud AISI 316



RIF. ART.	A	L	F	D
101660	M5	80	32	43
101661	M6	90	35	50
101662	M8	130	55	65
101663	M10	150	55	75

Asta filettata doppia destra/sinistra, inox AISI 316

Stainless steel double thread stud, right/left, AISI 316

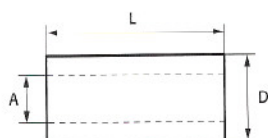


RIF. ART.	A	L	F
101680	M5	65	30
101681	M6	65	30
101682	M8	65	30
101683	M10	85	40



Cilindro di fermo da pressare, inox AISI 316

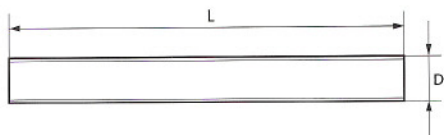
Stainless steel stop pipe to be swaged, AISI 316



RIF. ART.	A	D	L
101820	3	6,3	8
101821	4	8	10
101822	5	10	12
101823	6	12	14

Barretta filettata interamente, inox AISI 316

Stainless steel threaded rod stud, AISI 316



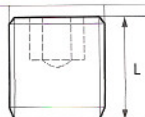
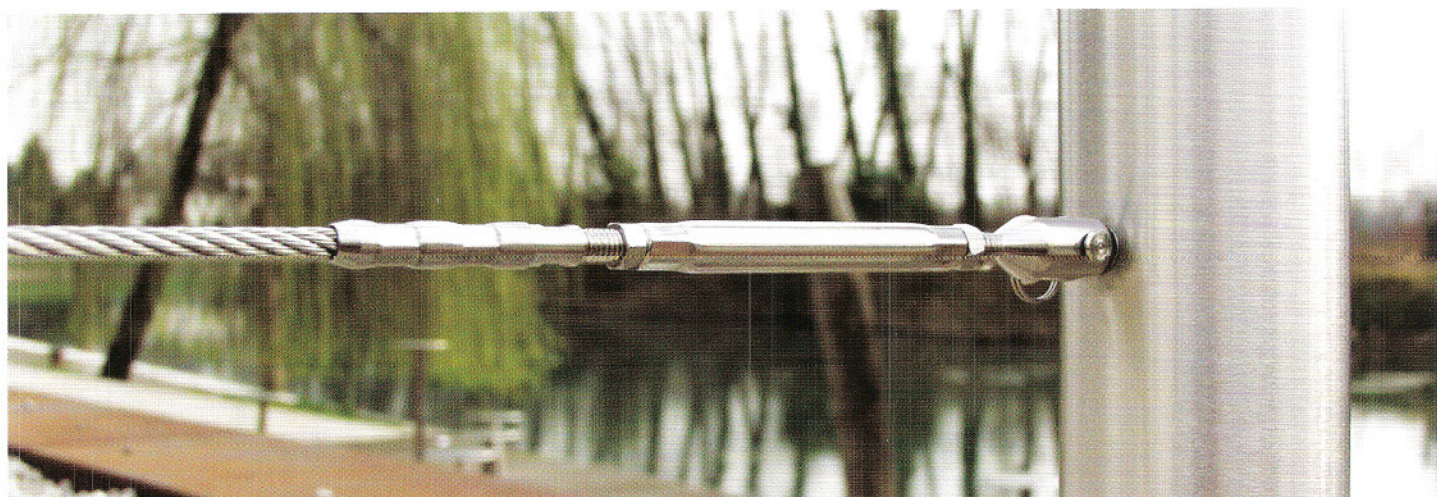
RIF. ART.	D	L
101840	M5	60
101841	M6	70
101842	M6	85
101843	M8	95
101844	M8	105
101845	M10	120

Barra filettata "MA" dx, inox AISI 316

Stainless steel threaded rod "MA" right, AISI 316



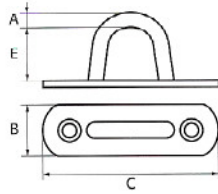
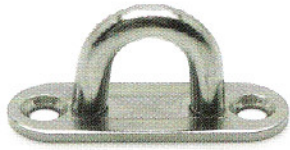
RIF. ART.	M	L
101860	M6	1000
101861	M8	1000
101862	M10	1000
101863	M12	1000
101864	M14	1000
101865	M16	1000
101866	M18	1000
101867	M20	1000



102023	M8	8
102024	M10	10

Cavallotto con piastrina, inox AISI 316

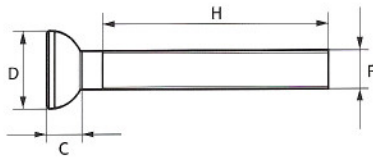
Stainless steel pad eye base, AISI 316



RIF. ART.	A	B	C	E
101880	5	20	75	16
101881	6	20	88	19
101882	8	25	100	22

Tirante filettato a testa semitonda, inox AISI 316

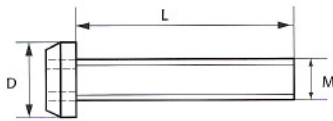
Stainless steel half round threaded stud, AISI 316



RIF. ART.	F	C	D	H
101900	M6	6	10	40
101901	M8	8	12	55
101902	M10	10	16	60
101903	M12	12	20	70

Viti a testa bombata esagono incassato, inox AISI 316

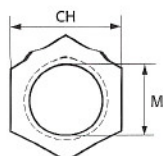
Stainless steel hex socket button head screws, AISI 316



RIF. ART.	M	D	L
101920	M5	9,5	40
101921	M6	10,5	50
101922	M8	14	60
101923	M10	17,5	60

Dadi "ribassati" dx e sx, inox AISI 316

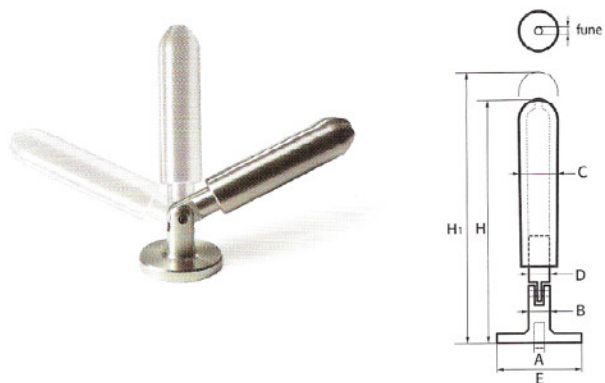
Stainless steel small-type nuts Right / Left, AISI 316



RIF. ART.	M	CH
101940	M6	8
101941	M8	10
101942	M10	13
101943	M12	17
101944	M14	19
101945	M16	22
101946	M18	24
101947	M20	27
101948	M22	30
101949	M24	32

Tenditore orientabile per fune, inox AISI 303

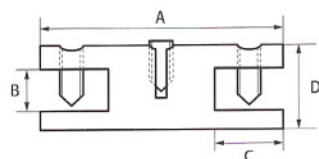
Stainless steel adjustable turnbuckle for wire rope, AISI 303



RIF. ART.	FUNE ROPE	A	B	C	D	E	H MIN - H MAX
101740	1	M6	10	15	10	30	75 ÷ 100
101741	2	M6	10	15	10	30	75 ÷ 100
101742	3	M6	10	15	10	30	75 ÷ 100

Forcella doppia ferma fune per fissaggio piani, inox AISI 303

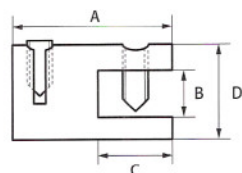
Stainless steel double stopper fork to connect frame with rope, AISI 303



RIF. ART.	FUNE ROPE	A	B	C	D	
101760	1,5	45	7	13	16	ORIZZONTALE HORIZONTAL
101761	2	45	7	13	16	VERTICALE VERTICAL

Forcella ferma fune per fissaggio piani, inox AISI 303

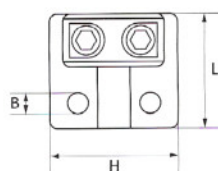
Stainless steel stopper fork to connect frame with rope, AISI 303



RIF. ART.	FUNE ROPE	A	B	C	D	
101780	1,5	26	7	13	16	ORIZZONTALE HORIZONTAL
101781	2	26	7	13	16	VERTICALE VERTICAL

Piastrina ferma fune per fissaggio a strutture, inox AISI 316

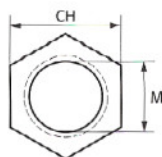
Stainless steel stopper plate to connect frame with wire rope, AISI 316



RIF. ART.	FUNE ROPE	B	H	L
101800	Ø 3	M5	25	20
101801	Ø 4	M5	25	20
101802	Ø 5	M5	25	20
101803	Ø 6	M5	25	20

Dadi medi DIN 934, inox AISI 316

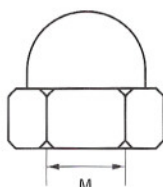
Stainless steel standard nuts DIN 934, AISI 316



RIF. ART.	M	CH
101960	M5	8
101961	M6	10
101962	M8	13
101963	M10	17
101964	M12	19
101965	M14	22
101966	M16	24
101967	M18	27
101968	M20	30
101969	M22	32
101970	M24	36

Dadi ciechi DIN 1587, inox AISI 316

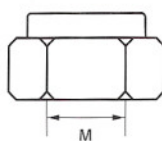
Stainless steel domed cap nuts DIN 1587, AISI 316



RIF. ART.	M	CH
101980	M6	10
101981	M8	13
101982	M10	17
101983	M12	19
101984	M14	22
101985	M16	24

Dadi autobloccanti DIN 985, inox AISI 316

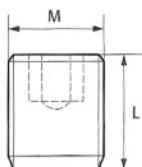
Stainless steel self-locking nuts DIN 985, AISI 316



RIF. ART.	M	CH
102000	M6	10
102001	M8	13
102002	M10	17
102003	M12	19
102004	M14	22
102005	M16	24

Grani DIN 914, inox AISI 316

Stainless steel hex socket set screws DIN 914, AISI 316



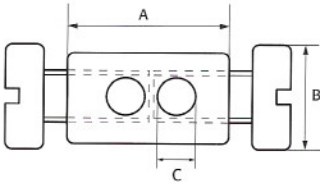
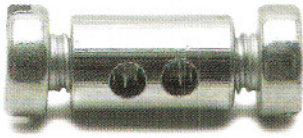
RIF. ART.	M	L
102020	M4	5
102021	M5	5
102022	M6	6
102023	M8	8
102024	M10	10

ARTICOLI IN OTTONE NICHELATO

NICKEL-PLATED BRASS ARTICLES

Morsetto serrafune a 2 fori, nichelato

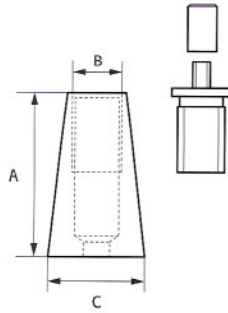
Nickel-plated rope clamp with 2 holes



RIF. ART.	FUNE ROPE	A	B	C
102080	1	10	6	2
102081	1,5	10	6	2
102082	2	10	6	2

Bloccafune automatico, nichelato

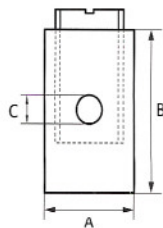
Nickel-plated automatic rope clamp



RIF. ART.	FUNE ROPE	A	B	C
102101	1	32	M10 x 1	20
102102	1,5	32	M10 x 1	20
102103	2	32	M10 x 1	20

Morsetto per fune, nichelato

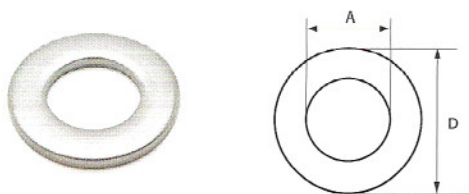
Nickel-plated wire rope clip



RIF. ART.	FUNE ROPE	A	B	C
102120	1	5	7	2
102121	1,5	5	7	2
102122	2	5	7	2

Rondelle piane DIN 125, inox AISI 316

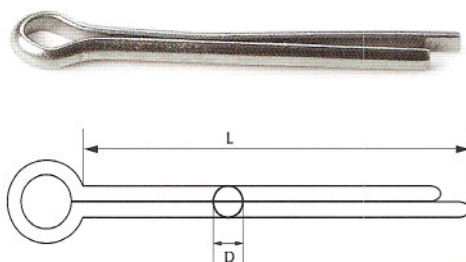
Stainless steel plain washers DIN 125, AISI 316



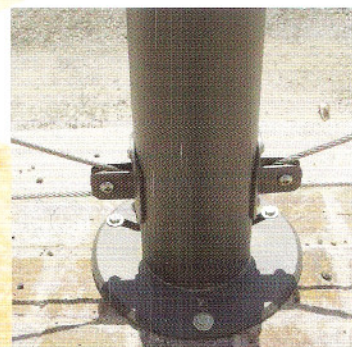
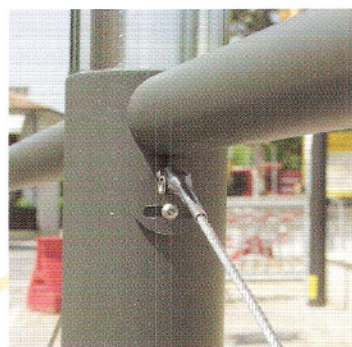
RIF. ART.	A	D
102040	M6	12
102041	M8	16
102042	M10	20
102043	M12	24
102044	M14	28
102045	M16	32
102046	M20	37

Copiglie DIN 94, inox AISI 316

Stainless steel split pins DIN 94, AISI 316



RIF. ART.	D	L
102060	2	15
102061	2,5	25
102062	3	30
102063	4	40
102064	5	50
102065	6	60
102066	8	80



Istruzioni per la pressatura manuale dei terminali (per usi non impegnativi)

Instructions for manual swaging of terminals (for undemanding use)

Pressatura Manuale Terminali

- 1) Con una cesoia idonea tagliare la fune in modo tale da ottenere un taglio netto senza aperture dei trefoli.
- 2) Inserire la fune nel terminale fino alla battuta del foro.
- 3) Inserire nella pressa le matrici corrispondenti al diametro del terminale da pressare
- 4) Fare n°3 pressature equidistanti, azionando la leva fino a quando non scatta la valvola di massima pressione. Mediante il dispositivo di rilascio situato sul fianco della pressa è possibile in qualsiasi istante diminuire la pressione delle matrici.

Manual swaging of terminals

- 1) Using suitable cutters, cut the wire rope cleanly so that the strands do not open.
- 2) Insert the rope into the terminal as far as it will go.
- 3) Select dies that correspond to the diameter of the terminal to be swaged and insert them into the swaging press
- 4) Press the terminal in 3 points equally spaced apart, keeping the lever pressed down until the maximum pressure valve trips. The pressure of the dies may be reduced at any time through the release device located on the side of the grip.

Terminali con Montaggio rapido

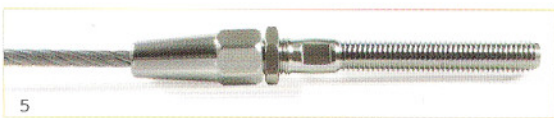
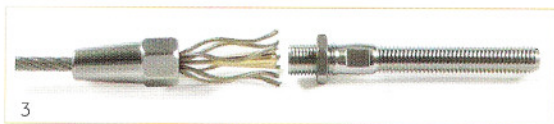
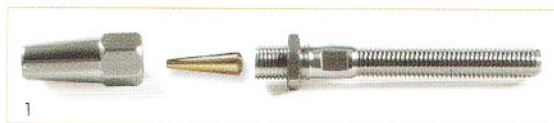
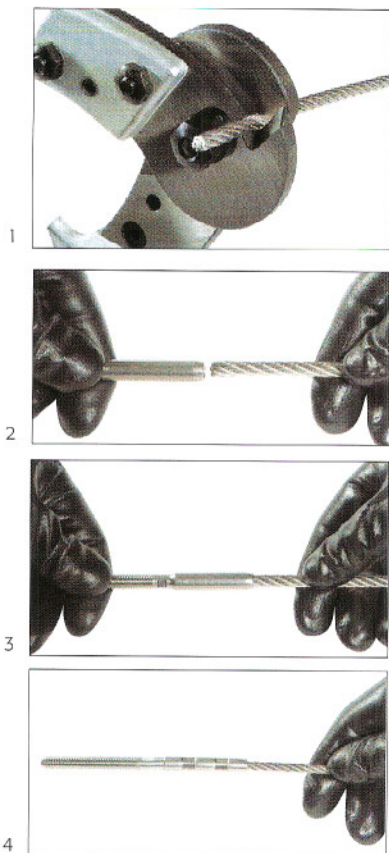
- 1) Con una cesoia idonea tagliare la fune in modo tale da ottenere un taglio netto senza aperture dei trefoli
- 2) Smontare il terminale nelle tre parti che lo compongono
- 3) Strefolare la fune ed inserire nell'anima centrale il cono in ottone/acciaio con la punta rivolta verso il fondo del coprimorsetto
- 4) Richiudere la fune in modo tale che i trefoli avvolgano uniformemente il cono ottonato
- 5) Avvitare ora le due parti e bloccare il controdado in modo energico onde evitare allentamenti

Nell'operazione di chiusura si consiglia l'utilizzo di pasta sigillante e frena filetti in modo tale da rendere il montaggio più sicuro.

Quick fitting terminals

- 1) Using suitable cutters, cut the wire rope or cable cleanly so that the strands do not open
- 2) Separate the terminal into its three constituent parts
- 3) Separate the strands of the rope and insert the brass/steel cone into the central core with the point of the cone facing the bottom of the terminal barrel
- 4) Reclose the rope so that the strands are evenly twisted around the brass cone
- 5) Now screw together the two parts and fully tighten the lock nut to prevent loosening

It is advisable when closing to use thread sealing paste to make the fitting even tighter.



UTENSILI OLEODINAMICI PER PRESSATURA E TAGLIO

SWAGING AND CUTTING

HYDRAUKIC TOOLS

Pressa oleodinamica manuale 50 kn
Manual hydraulic press 50 kN

RIF.
ART.
POM 1



Pressa oleodinamica elettrica 50 kn
Electric hydraulic press 50 kN

RIF.
ART.
POE 1



Pressa oleodinamica manuale 130 kn
Manual hydraulic press 130 kN

RIF.
ART.
POM 2



Cesoia tagliafuni 1 ÷ 6 mm
Rope cutter 1 ÷ 6 mm

RIF.
ART.
C9



TIPOLOGIE DI MONTAGGIO

TYPES OF ASSEMBLY



RIF.
ART.
TF 01



RIF.
ART.
TF 02



RIF.
ART.
TF 03



RIF.
ART.
TF 04



RIF.
ART.
TF 05



RIF.
ART.
TF 06



RIF.
ART.
TF 07



RIF.
ART.
TF 08



RIF.
ART.
TF 09



RIF.
ART.
TF 10