



settore
INDUSTRIA

INDUSTRIAL SECTOR

Strallature per tensostrutture

Tiranti per edilizia

Facciate continue

Tiranti in tondo pieno

Accessori vari

Guys for tensile structures

Tie rods for the building trade

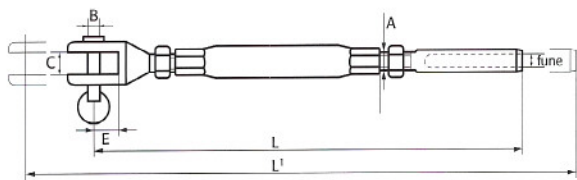
Curtain walls

Solid tie rods

Other accessories

Tenditori forcella fresata / pressare, inox AISI 316

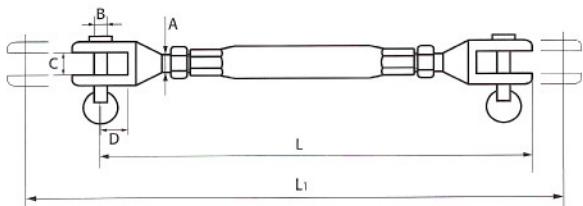
Stainless steel fork / swage turnbuckles, AISI 316



RIF. ART.	FUNE ROPE	A	B	C	E	L	L ¹	CAR. ROTT. B. LOAD
201001	2,5	M5	4	5	8	150	200	650
201002	3	M6	5	5	10	160	230	900
201003	4	M8	6	8	12	180	250	1.700
201004	5	M10	8	8	16	210	290	2.500
201005	6	M12	10	10	18	250	330	4.100
201006	7	M14	12	12	20	290	370	5.100
201007	8	M16	12	12	20	320	430	6.400
201008	10	M18	14	14	24	400	510	9.800
201009	12	M20	16	16	28	440	590	13.500
201010	14	M22	20	18	36	490	640	17.800
201011	16	M24	24	20	42	540	720	23.000
201012	18	M27	26	20	45	600	780	29.000
201013	20	M30	30	22	54	660	870	34.500
201014	22	M33	32	22	58	690	910	40.500

Tenditori a due forcelle, inox AISI 316

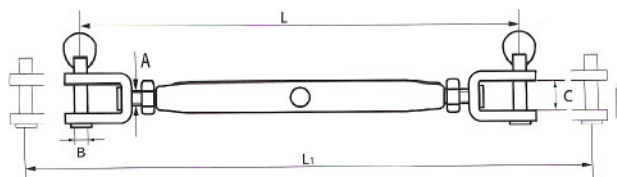
Stainless steel double fork turnbuckles, AISI 316



RIF. ART.	A	B	C	D	L	L ¹	CAR. ROTT. B. LOAD
201020	M5	4	5	8	125	175	650
201021	M6	5	5	10	140	190	900
201022	M8	6	8	12	160	230	1.700
201023	M10	8	8	16	190	270	2.500
201024	M12	10	10	18	215	305	4.100
201025	M14	12	12	20	250	345	5.100
201026	M16	12	12	20	280	390	6.400
201027	M18	14	14	24	345	470	9.800
201028	M20	16	16	28	360	520	13.500
201029	M22	20	18	36	400	570	17.800
201030	M24	24	20	42	450	630	23.000
201031	M27	26	20	45	500	680	29.000
201032	M30	30	22	54	550	770	34.500
201033	M33	32	22	58	600	860	40.500

Tenditori con due forcelle saldate, inox AISI 316

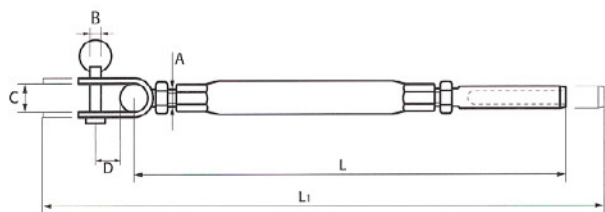
Stainless steel turnbuckles with two welded forks, AISI 316



RIF. ART.	A	B	C	L	L ¹
201040	M5	6	11	125	175
201041	M6	6	11	135	200
201042	M8	6	11	145	210
201043	M10	8	13	180	250
201044	M12	12	12	210	300
201045	M14	12	13	260	410
201046	M16	14	15	290	460
201047	M20	15	21	350	520

Tenditori forcella snodata / pressare, inox AISI 316

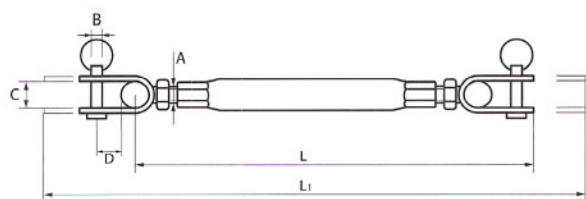
Stainless steel toggle / swage terminal turnbuckles, AISI 316



RIF. ART.	FUNE ROPE	A	B	C	D	L	L ₁	CAR. ROTT. B. LOAD
201060	4	M8	6	8	14	195	265	1.700
201061	5	M10	8	10	16	245	315	2.500
201062	6	M12	10	12	18	285	365	4.100
201063	7	M14	12	15	23	320	410	5.100
201064	8	M16	12	15	26	365	475	6.400
201065	10	M18	14	16	32	445	565	9.800
201066	12	M20	16	18	38	505	655	13.500
201067	14	M22	20	20	49	575	725	17.800
201068	16	M24	24	24	60	630	810	23.000

Tenditori a due forcelle snodate, inox AISI 316

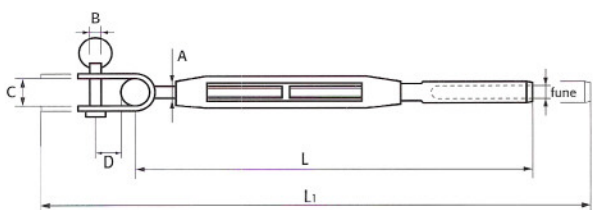
Stainless steel double toggle turnbuckles, AISI 316



RIF. ART.	FUNE ROPE	A	B	C	D	L	L ₁	CAR. ROTT. B. LOAD
201080	4	M8	6	8	14	180	250	1.700
201081	5	M10	8	10	16	225	295	2.500
201082	6	M12	10	12	18	260	340	4.100
201083	7	M14	12	15	23	290	380	5.100
201084	8	M16	12	15	26	335	445	6.400
201085	10	M18	14	16	32	405	525	9.800
201086	12	M20	16	18	38	460	610	13.500
201087	14	M22	20	20	49	520	670	17.800
201088	16	M24	24	24	60	570	750	23.000

Tenditori forcella snodata - pressare; inox AISI 316, canala bronzo

Stainless steel toggle / swage terminal turnbuckles, AISI 316, bronze body

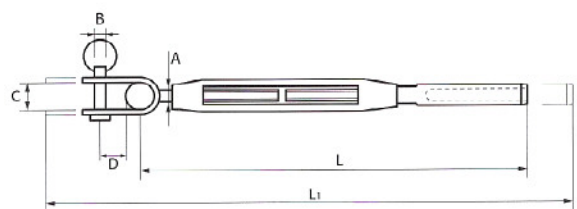


RIF. ART.	FUNE ROPE	A	B	C	D	L	L ₁	CAR. ROTT. B. LOAD
201100	4	M8	6	8	14	195	265	1.700
201101	5	M10	8	10	16	245	315	2.500
201102	6	M12	10	12	18	285	365	4.100
201103	7	M14	12	15	23	320	410	5.100
201104	8	M16	12	15	26	365	475	6.400
201105	10	M18	14	16	32	445	565	9.800
201106	12	M20	16	18	38	505	655	13.500
201107	14	M22	20	20	49	575	725	17.800
201108	16	M24	24	24	60	630	810	23.000



Tenditori forcella snodata / pressare, canaula AISI 316 con boccole bronzo "Antigrippaggio", FLT passo fine

Toggle / swage turnbuckles, 316 stainless steel body with bronze "Anti-seizing" bushes, fine thread



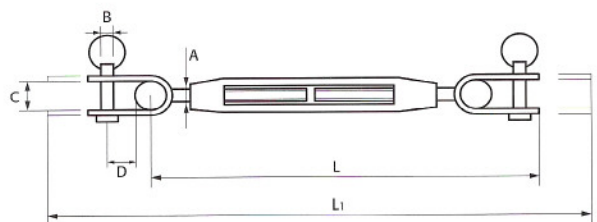
RIF. ART.	FUNE ROPE	A	B	C	D	L	L1
201120	7	MB12	12	14	12	320	410
201121	8	MB14	14	15	23	365	465
201122	10	MB16	16	17	26	445	565
201123	10	MB18	16	17	32	475	605
201124	12	MB20	18	18	38	505	655
201125	14	MB22	21	22	49	575	725
201126	16	MB24	24	25	60	630	810
201127	19	MB27	28	29	72	690	895

Alternativa con Canaula in "Titanio" - Alternative with "Titanium" body

RIF. ART.	FUNE ROPE	A	B	C	D	L	L1
201140	7	MB12	12	14	12	320	410
201141	8	MB14	14	15	23	365	465
201142	10	MB16	16	17	26	445	565
201143	10	MB18	16	17	32	475	605
201144	12	MB20	18	18	38	505	655
201145	14	MB22	21	22	49	575	725
201146	16	MB24	24	25	60	630	810
201147	19	MB27	28	29	72	690	895

Tenditori a due forcelle snodate, inox AISI 316; canaula bronzo

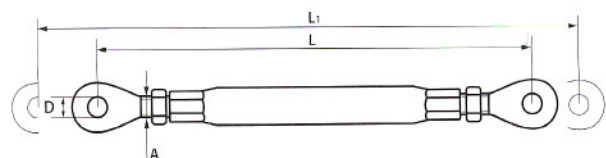
Stainless steel double toggle turnbuckles, AISI 316; bronze body



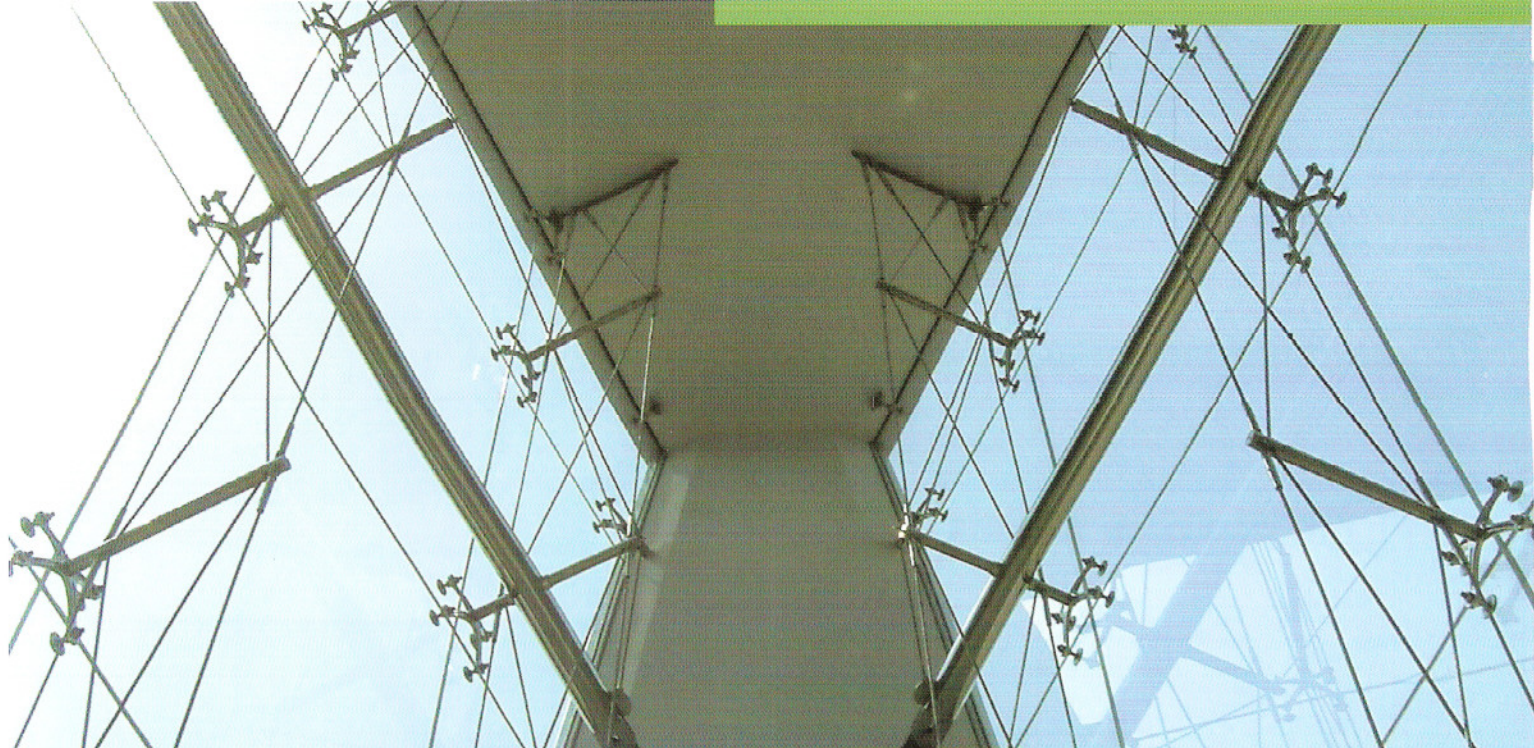
RIF. ART.	A	B	C	D	L	L1	CAR. ROTT. B. LOAD
201160	M8	6	8	14	180	250	1.700
201161	M10	8	10	16	225	295	2.500
201162	M12	10	12	18	260	340	4.100
201163	M14	12	15	23	290	380	5.100
201164	M16	12	15	26	335	445	6.400
201165	M18	14	16	32	405	525	9.800
201166	M20	16	18	38	460	610	13.500
201167	M22	20	20	49	520	670	17.800
201168	M24	24	24	60	570	730	23.000

Tenditori a due occhi, canaula chiusa, inox AISI 316

Stainless steel double eye turnbuckles with closed body, AISI 316

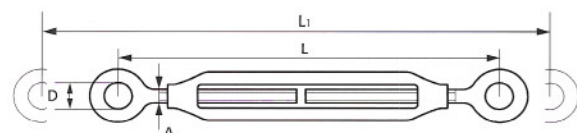


RIF. ART.	A	D	L	L'	CAR. ROTT. B. LOAD
201180	M6	5	60	115	900
201181	M8	6	73	140	1700
201182	M10	8	92	160	2500
201183	M12	10	102	195	4100
201184	M16	14	126	255	6400
201185	M20	18	165	340	13500



Tenditori a due occhi, canaula aperta, tipo economico;
inox AISI 316

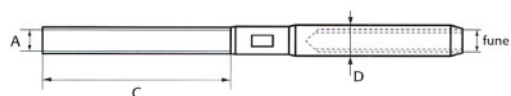
Stainless steel double eye turnbuckles, with open body, economic type AISI 316



RIF. ART.	A	D	L	L'
201200	M5	8	70	110-170
201201	M6	10	90	140-220
201202	M8	14	120	180-280
201203	M10	16	150	230-360
201204	M12	18	200	280-460
201205	M16	26	250	370-590
201206	M20	30	300	420-650

Terminali filettati a pressione, inox AISI 316

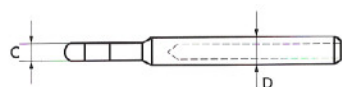
Stainless steel threaded swage terminals, AISI 316



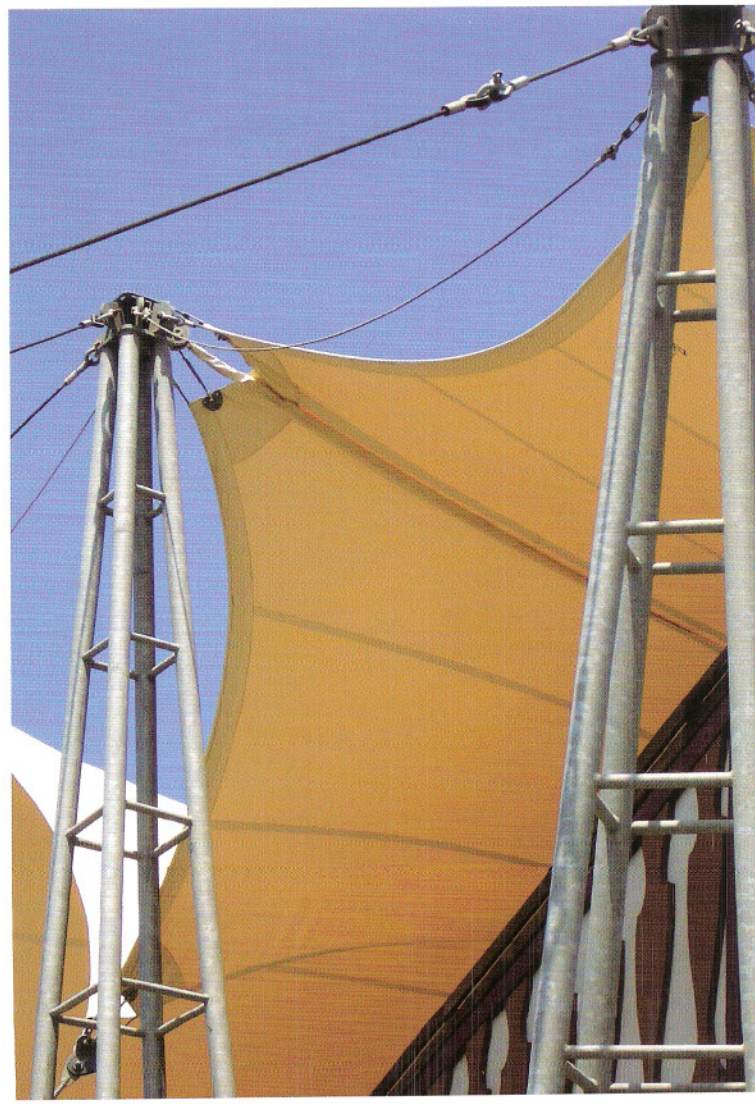
RIF. ART.	FUNE ROPE	A	C	D
201220	3	M6	40	6
201221	4	M8	55	8
201222	5	M10	60	10
201223	6	M12	70	12
201224	7	M14	80	14
201225	8	M16	90	16
201226	10	M18	110	18
201227	12	M20	120	20
201228	14	M22	130	26
201229	16	M24	140	28
201230	18	M27	160	35,5
201231	20	M30	190	35,5
201232	22	M33	220	38
201233	24	M36	250	42

Terminali ad occhio, inox AISI 316

Stainless steel eye terminals, AISI 316

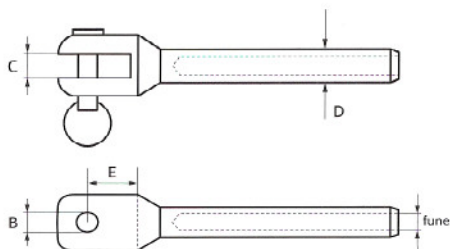


RIF. ART.	FUNE ROPE	B	C	D
201240	2	4	3	6
201241	2,5	5	3	6
201242	3	5	4,5	6
201243	4	6	6	8
201244	5	8	7	10
201245	6	10	8,5	12
201246	7	12	10	14
201247	8	12	10,5	16
201248	10	14	12,5	18
201249	12	16	15	20
201250	14	20	16	26
201251	16	24	18	28
201252	18	28	20	35,5
201253	20	32	22	35,5
201254	22	36	24	38
201255	24	40	26	42



Terminali a forcella, inox AISI 316

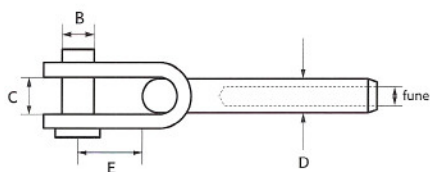
Stainless steel fork terminals, AISI 316



RIF. ART.	FUNE ROPE	C	B	D	E
201260	2	5	4	6	9
201261	2,5	5	5	6	10
201262	3	6	5	6	11
201263	4	8	6	8	13
201264	5	8	8	10	17
201265	6	10	10	12	18
201266	7	12	12	14	22
201267	8	12	12	16	23
201268	10	14	14	18	31
201269	12	16	16	20	32
201270	14	18	20	26	39
201271	16	20	24	28	42
201272	18	22	28	35,5	48
201273	20	24	32	35,5	55
201274	22	26	36	38	61
201275	24	28	40	42	68

Terminali a forcella snodata, inox AISI 316

Stainless steel toggle terminals, AISI 316



RIF. ART.	FUNE ROPE	B	C	D	E
201280	4	6	8	8	13
201281	5	8	10	10	17
201282	6	10	12	12	18
201283	7	12	15	14	22
201284	8	12	15	16	23
201285	10	14	16	18	32
201286	12	16	18	20	38
201287	14	20	20	26	49
201288	16	24	24	28	60
201289	18	28	30	35,5	72
201290	20	32	32	35,5	84

Terminali a gancio, inox AISI 316

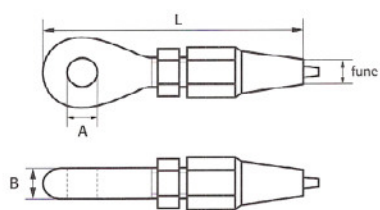
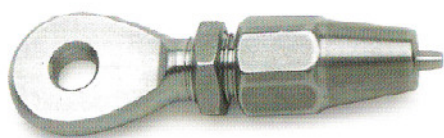
Stainless steel hook terminals, AISI 316



RIF. ART.	FUNE ROPE	D	L
201300	2	6	60
201301	2,5	6	60
201302	3	6	60

Terminali manuali ad occhio, inox AISI 316

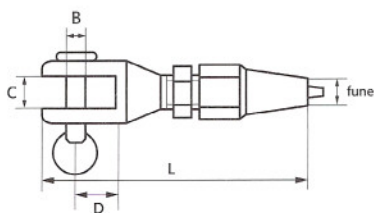
Stainless steel manual swageless eye terminals, AISI 316



RIF. ART.	FUNE ROPE	A	B	L
201320	4	6	5	54
201321	5	8	6,5	63
201322	6	10	8,5	82
201323	7	12	10,5	87
201324	8	12	10,5	90
201325	10	14	14	110
201326	12	16	16	140
201327	14	20	20	165
201328	16	24	24	165

Terminali manuali a forcella, inox AISI 316

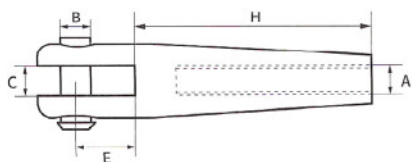
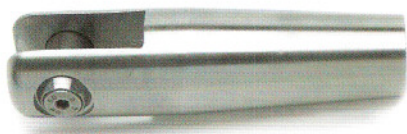
Stainless steel manual swageless fork terminals, AISI 316



RIF. ART.	FUNE ROPE	B	C	D	L
201340	4	6	8	13	56
201341	5	8	8	17	65
201342	6	10	10	18	85
201343	7	12	12	22	90
201344	8	12	12	23	94
201345	10	14	14	31	115
201346	12	16	16	32	145
201347	14	20	18	39	170
201348	16	24	20	42	175

Forcella fresata filettata femmina, tipo lungo, inox AISI 316

Stainless steel internal thread fork, long type, AISI 316

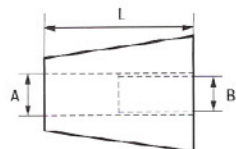


RIF. ART.	A	B	C	E*	H
201360	M8	8	8	13	40
201361	M10	10	10	17	50
201362	M12	12	12	18	60
201363	M16	16	14	23	80
201364	M20	20	18	31	95

* La misura "E" può essere modificata a richiesta
Measurement "E" can be changed on request

Dadi conici lunghi per forcelle, inox AISI 316

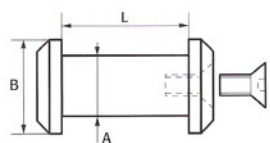
Stainless steel conical nut, long type, for forks, AISI 316



RIF. ART.	A	B	L
201380	M10	11	18
201381	M12	13	22
201382	M16	18	28
201383	M20	22	35

Perno con vite e rondella svasata a incasso, inox AISI 316

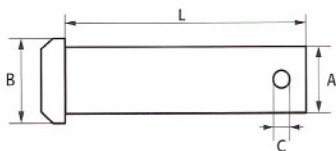
Stainless steel pin with cone head bolt and cone washer, AISI 316



RIF. ART.	A	B	L
201400	12	16	27
201401	16	20	35
201402	19	26	40
201403	22	30	45
201404	24	32	51

Perno semplice per forcelle, inox AISI 316

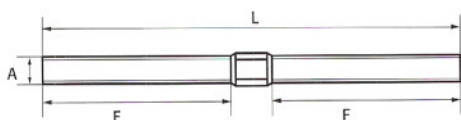
Stainless steel pin for forks, AISI 316



RIF. ART.	A	B	L	C
201420	5	7	13,5	2
201421	6	8	17	2
201422	8	10	20	2,5
201423	10	12	23	2,5
201424	12	14	26	3
201425	14	16	38	3
201426	16	20	42	4
201427	19	22	45	4

Asta filettata doppia destra/sinistra alle estremità, inox AISI 316

Stainless steel double threaded stud, right / left, AISI 316

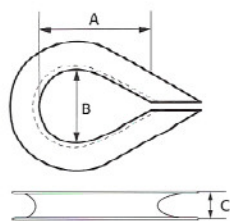


RIF. ART.	A	F	L*
201440	M8	45	-
201441	M10	55	-
201442	M12	70	-
201443	M16	90	-
201444	M20	105	-

*Misura a richiesta
Size to request

Redance normali, inox AISI 316

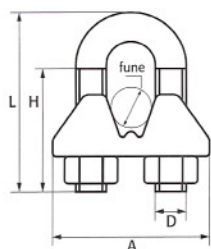
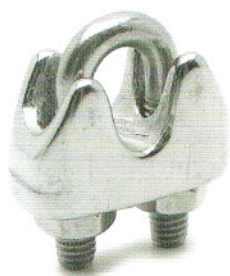
Stainless steel standard thimbles, AISI 316



RIF. ART.	FUNE ROPE	A	B	C
201460	3	13	9	4
201461	4	15	10	5
201462	5	20	13	8
201463	6	23	15	9
201464	8	32	20	12
201465	10	35	25	14
201466	12	50	30	17
201467	14	65	40	20
201468	16	80	43	22
201469	18	96	60	25
201470	20	100	26	60
201471	22	115	28	62
201472	24	125	34	65

Morsetti a cavalletto per fune, inox AISI 316

Stainless steel wire rope clips, AISI 316

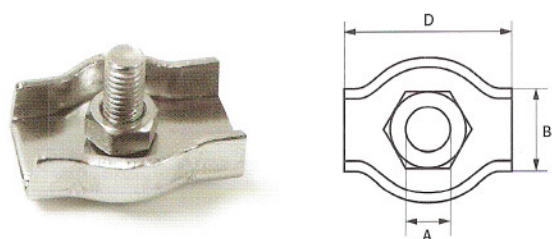


RIF. ART.	FUNE ROPE	A	H	L	D
201480	3-4	22	12	22	M4
201481	5	24	15	24	M5
201482	6	30	18	33	M6
201483	8	33	20	25	M6
201484	10	37	22	43	M8
201485	12	45	30	54	M10
201486	14	46	30	54	M10
201487	16	53	30	65	M10
201488	18	55	35	80	M12
201489	19-20	58	35	80	M12



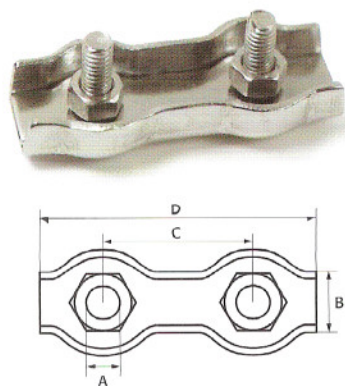


Morsetti simplex per fune, inox
Stainless steel duplex wire rope clamps



RIF. ART.	FUNE ROPE	A	B	D
201500	2	M4	7,5	17,5
201501	3	M4	10	17,5
201502	4	M5	12	22
201503	5	M5	14	24
201504	6	M6	17	30
201505	8	M8	22	36
201506	10	M10	25	42

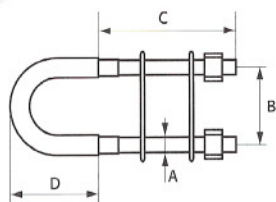
Morsetti duplex per fune, inox
Stainless steel duplex wire rope clamps



RIF. ART.	FUNE ROPE	A	B	C	D
201520	2	M4	7,5	20,5	38
201521	3	M4	10	20,5	38
201522	4	M5	12	25	47
201523	5	M5	14	27	51
201524	6	M6	17	33	63
201525	8	M8	22	42	76
201526	10	M10	25	46	88

Cavalotto con piastrine, inox AISI 316

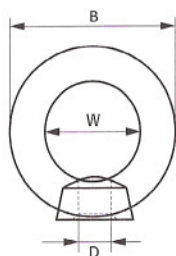
Stainless steel "U" bolts, AISI 316



RIF. ART.	A	B	C	D
201540	M6	26	60	34
201541	M8	34	65	40
201542	M10	50	78	50
201543	M12	62	80	60

Golfari femmina DIN 582, AISI 316.

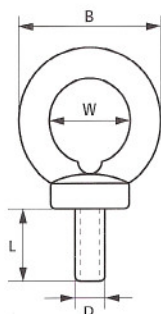
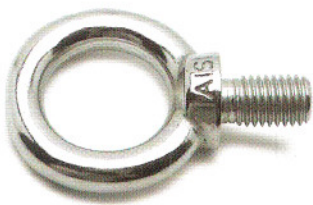
Stainless steel lifting eye nut DIN 582, AISI 316



RIF. ART.	D	B	W
201560	M6	36	20
201561	M8	36	20
201562	M10	45	25
201563	M12	54	30
201564	M14	54	30
201565	M16	63	35
201566	M20	72	40
201567	M24	90	50

Golfari maschi DIN 580, AISI 316

Stainless steel lifting eyebolt DIN 580, AISI 316



RIF. ART.	D	B	W	L
201580	M6	36	20	13
201581	M8	36	20	13
201582	M10	45	25	17
201583	M12	54	30	20,5
201584	M14	54	30	20,5
201585	M16	63	35	27
201586	M18	63	35	27
201587	M20	72	40	30
201588	M24	90	50	36

