



settore
NAUTICA

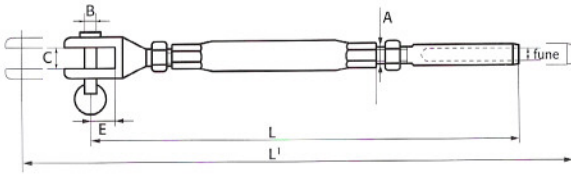
NAUTICAL SECTOR

Sartiame completo a misura, stralli,
paterazzi, draglie, volanti, tendipaterazzi,
tesastralli Kandar

*Complete rigging to stay sizes, stays, forestays,
steering wheels, backstay turnbuckles,
Kandar stay turnbuckles*

Tenditori forcella fresata / pressare, inox AISI 316

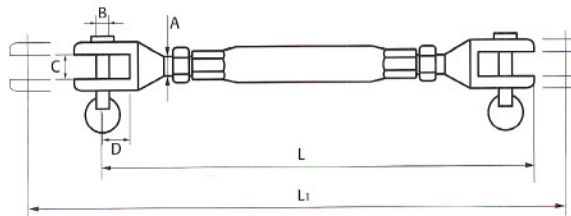
Stainless steel fork / swage rigging screws, AISI 316



RIF. ART.	FUNE ROPE	A	B	C	E	L	L'	CAR. ROTT. B. LOAD
301000	2,5	M5	4	5	8	150	200	650
301001	3	M6	5	6	10	160	230	900
301002	4	M8	6	8	12	180	250	1.700
301003	5	M10	8	8	16	210	290	2.500
301004	6	M12	10	10	18	250	330	4.100
301005	7	M14	12	12	20	290	370	5.100
301006	8	M16	12	12	20	320	430	6.400
301007	10	M18	14	14	24	400	510	9.800
301008	12	M20	16	16	28	440	590	13.500
301009	14	M22	20	18	36	490	640	17.800
301010	16	M24	24	20	42	540	720	23.000
301011	18	M27	26	20	45	600	780	29.000
301012	20	M30	30	22	54	660	870	34.500
301013	22	M33	32	22	58	690	910	40.500

Tenditori a due forcelle, inox AISI 316

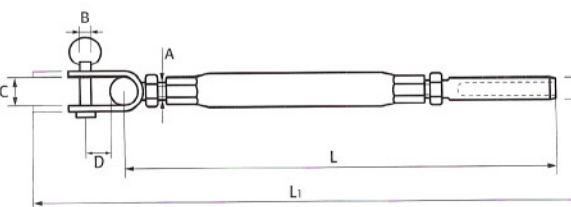
Stainless steel double fork rigging screws, AISI 316



RIF. ART.	A	B	C	D	L	L'	CAR. ROTT. B. LOAD
301020	M5	4	5	8	125	175	650
301021	M6	5	6	10	140	190	900
301022	M8	6	8	12	160	230	1.700
301023	M10	8	8	16	190	270	2.500
301024	M12	10	10	18	215	305	4.100
301025	M14	12	12	20	250	345	5.100
301026	M16	12	12	20	280	390	6.400
301027	M18	14	14	24	345	470	9.800
301028	M20	16	16	28	360	520	13.500
301029	M22	20	18	36	400	570	17.800
301030	M24	24	20	42	450	630	23.000
301031	M27	26	20	45	500	680	29.900
301032	M30	30	22	54	550	770	34.500
301033	M33	32	22	58	600	860	40.500

Tenditori forcella snodata – pressare, inox AISI 316

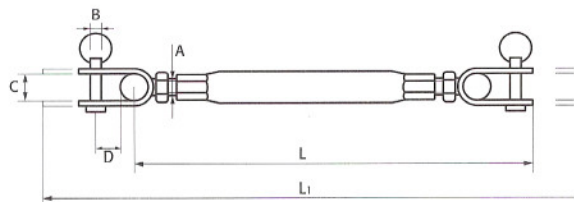
Stainless steel toggle - swage terminal rigging screws, AISI 316



RIF. ART.	FUNE ROPE	A	B	C	D	L	L'	CAR. ROTT. B. LOAD
301040	4	M8	6	8	14	195	265	1.700
301041	5	M10	8	10	16	245	315	2.500
301042	6	M12	10	12	18	285	365	4.100
301043	7	M14	12	15	23	320	410	5.100
301044	8	M16	12	15	26	365	475	6.400
301045	10	M18	14	16	32	445	565	9.800
301046	12	M20	16	18	38	505	655	13.500
301047	14	M22	20	20	49	575	725	17.800
301048	16	M24	24	24	60	630	810	23.000

Tenditori a due forcelle snodate, inox AISI 316

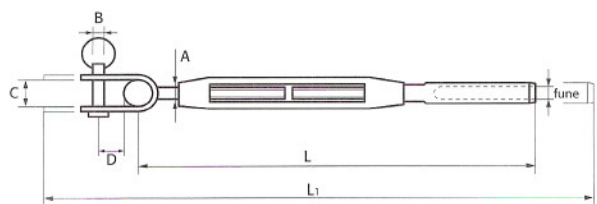
Stainless steel double toggle rigging screws, AISI 316



RIF. ART.	FUNE ROPE	A	B	C	D	L	L ₁	CAR. ROTT. B. LOAD
301060	4	M8	6	8	14	180	250	1.700
301061	5	M10	8	10	16	225	295	2.500
301062	6	M12	10	12	18	260	340	4.100
301063	7	M14	12	15	23	290	380	5.100
301064	8	M16	12	15	26	335	445	6.400
301065	10	M18	14	16	32	405	525	9.800
301066	12	M20	16	18	38	460	610	13.500
301067	14	M22	20	20	49	520	670	17.800
301068	16	M24	24	24	60	570	750	23.000

Tenditori forcella snodata - pressare, inox AISI 316; canaula bronzo

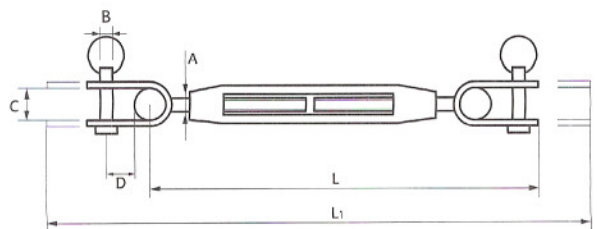
Stainless steel toggle-swage rigging screws, AISI 316; bronze body



RIF. ART.	FUNE ROPE	A	B	C	D	L	L ₁	CAR. ROTT. B. LOAD
301080	4	M8	6	8	14	195	265	1.700
301081	5	M10	8	10	16	245	315	2.500
301082	6	M12	10	12	18	285	365	4.100
301083	7	M14	12	15	23	320	410	5.100
301084	8	M16	12	15	26	365	475	6.400
301085	10	M18	14	16	32	445	565	9.800
301086	12	M20	16	18	38	505	655	13.500
301087	14	M22	20	20	49	575	725	17.800
301088	16	M24	24	24	60	630	810	23.000

Tenditori a due forcelle snodate, inox AISI 316; canaula bronzo

Stainless steel double toggle rigging screws, AISI 316; bronze body

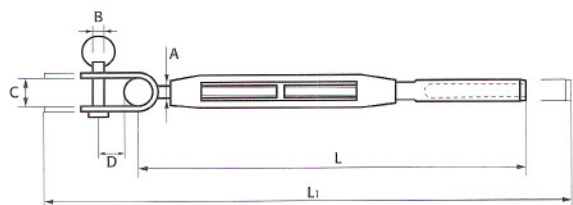


RIF. ART.	A	B	C	D	L	L ₁	CAR. ROTT. B. LOAD
301100	M8	6	8	14	250	180	1.700
301101	M10	8	10	16	295	225	2.500
301102	M12	10	12	18	340	260	4.100
301103	M14	12	15	23	380	290	5.100
301104	M16	12	15	26	445	335	6.400
301105	M18	14	16	32	525	405	9.800
301106	M20	16	18	38	610	460	13.500
301107	M22	20	20	49	670	520	17.800
301108	M24	24	24	60	730	570	23.000



Tenditori forcella snodata / pressare, canaula inox AISI 316 con boccole bronzo "Antigrippaggio", FLT passo fine.

Stainless steel toggle / swage rigging screws, AISI 316, body with bronze "Anti-seizing" bushes, fine thread



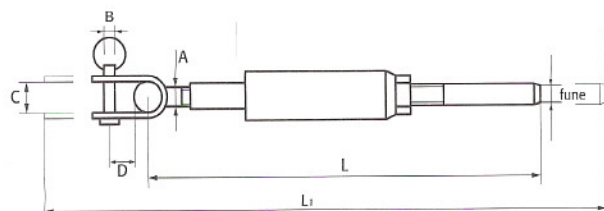
RIF. ART.	FUNE ROPE	A	B	C	D	L	L ₁
301120	7	MB12	12	14	18	320	410
301121	8	MB14	14	15	23	365	465
301122	10	MB16	16	17	26	445	565
301123	10	MB18	16	17	32	475	605
301124	12	MB20	18	18	38	505	655
301125	14	MB22	21	22	49	575	725
301126	16	MB24	24	25	60	630	810
301127	19	MB27	28	29	72	690	895

Alternativa con Canaula in "Titanio" - Alternative with "Titanium" body

RIF. ART.	FUNE ROPE	A	B	C	D	L ₁	L ₁
301140	7	MB12	12	14	18	410	410
301141	8	MB14	14	15	23	465	465
301142	10	MB16	16	17	26	565	565
301143	10	MB18	16	17	32	605	605
301144	12	MB20	18	18	38	655	655
301145	14	MB22	21	22	49	725	725
301146	16	MB24	24	25	60	810	810
301147	19	MB27	28	29	72	895	895

Tenditori inox AISI 316 - tipo telescopico - con corpo in bronzo speciale, forcilla/asta a pressare, asta di regolazione graduata e numerata - Impiego per fune metallica e per tondino.

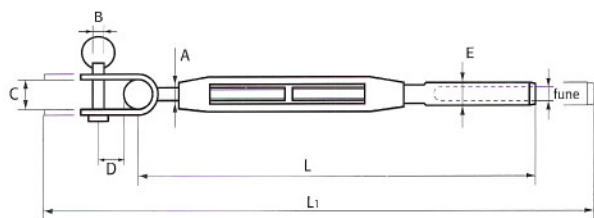
Stainless steel turnbuckles, AISI 316 - telescopic type - with special bronze body, fork/swage stud, calibrated and numbered regulating rod - application for wire rope and rod.



RIF. ART.	FUNE ROPE	A	B	C	D	L	L ₁	CAR. ROTT. B. LOAD
301160	4	M8	8	6	14	160	230	1.700
301161	5	M10	10	8	16	190	270	2.400
301162	6	M12	12	10	18	230	315	4.100
301163	7	M14	15	12	23	275	365	5.100
301164	8	M16	15	14	26	330	430	6.300
301165	10	M18	16	16	32	350	470	9.800
301166	12	M20	18	19	38	400	540	13.500

Tenditori inox AISI 316 con canala aperta in bronzo cromato o plastificato, forcella snodata/asta a pressare.

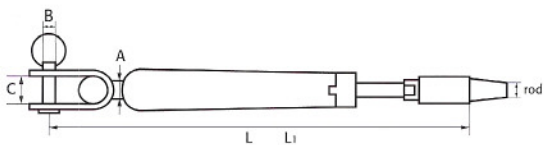
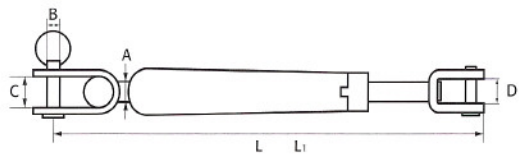
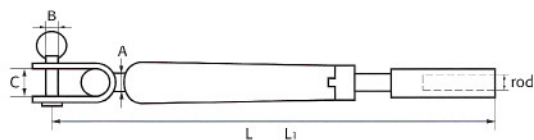
Stainless steel turnbuckles, AISI 316, with chromed or plasticized bronze open body, toggle fork/swage stud.



RIF. ART.	FUNE ROPE	A	B	C	D	E	L	L ₁	CAR. ROTT. B. LOAD
301180	4	MB8	8	8	14	7,5	180	250	2.180
301181	5	MB10	10	9,5	16	9	225	295	3.180
301182	6	MB10	10	9,5	16	12,6	260	340	3.480
301183	6	MB12	12	11	18	12,6	290	380	5.050
301184	7	MB12	12	11	18	14	335	445	5.050
301185	7	MB14	15	12	23	14	405	525	6.900
301186	8	MB14	15	12	23	16	460	610	6.900
301187	8	MB16	15	14	26	16	520	670	9.400
301188	10	MB16	15	14	26	17,8	570	750	9.400
301189	10	MB18	17	16	32	17,8			11.500
301190	12	MB20	19	18	35	21,4			14.700
301191	14	MB22	21	21	36	25			18.150
301192	16	MB24	25	24	42	28			21.150
301193	18	MB27	30	28	48	36			27.500
301194	20	MB30	34	32	55	36			33.600

* Tenditori bimetallo graduati, inox AISI 316

Stainless steel special calibrated turnbuckles, AISI 316



RIF. ART.	FUNE ROPE	A	B	C	L	L ₁	CAR. ROTT. B. LOAD
301200	4	M8	8	6	225	300	1.700
301201	5	M10	10	8	255	340	2.400
301202	6	M12	12	10	325	415	4.100
301203	7	M14	15	12	390	490	5.100
301204	8	M16	15	12	420	540	6.300
301205	10	M18	16	14	490	630	9.800
301206	12	M20	18	16	540	700	13.500

RIF. ART.	FUNE ROPE	A	B	C	D	L	L ₁	CAR. ROTT. B. LOAD
301220	4	M8	8	6	8	195	270	1.700
301221	5	M10	10	8	8	230	315	2.400
301222	6	M12	12	10	10	275	365	4.100
301223	7	M14	15	12	12	330	430	5.100
301224	8	M16	15	12	12	350	470	6.300
301225	10	M18	16	14	14	400	540	9.800
301226	12	M20	18	16	16	440	600	13.500

* Innovativo tenditore, brevettato, in acciaio inox, con canala in bronzo speciale cromato – antigrippaggio – forcella snodata girevole – pratico e nuovo sistema di fermo della canala – asta di regolazione graduata e numerata – nessuna fuori uscita di parti filettate – disegno elegante e funzionale, impiego per fune metallica e per tondino.

New patented stainless steel turnbuckle with body in chromed special bronze – anti seizing – swivel toggle – new and practical stop body system – calibrated and numbered regulating rod – no outer thread – elegant and functional design. Application for wire rope and rod.

RIF. ART.	FUNE ROPE	A	B	C	L	L ₁	CAR. ROTT. B. LOAD
301240	4	M10	10	8	240	325	2.400
301241	5	M12	12	10	300	390	4.100
301242	6	M14	15	12	360	460	5.100
301243	7	M16	15	12	385	505	6.300
301244	8	M18	16	14	445	585	9.800
301245	9	M20	18	16	490	650	13.500

Tesastrallo "KANDAR", inox AISI 316

Stainless steel "KANDAR" stay turnbuckles, AISI 316



RIF. ART.	FUNE ROPE	FILETTO THREAD	L	L ₁
301260	5-6	10	225	300
301261	6-7	12	260	340
301262	7-8	16	350	440
301263	10-12	20	395	495

Pratico e funzionale sistema di aggancio e sgancio rapido per sartie. Attacco in basso a gancio o a forcella.

Practical and effective system for quick hooking and release of shrouds. Bottom hook or fork attachment.

Tesastrallo, inox AISI 316.

Stainless steel backstay adjuster, AISI 316



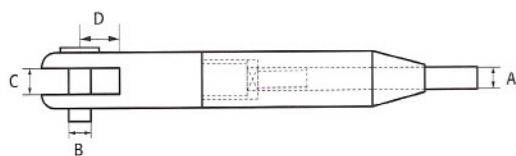
RIF. ART.	FUNE ROPE	FILETTO THREAD	L	L ₁
301280	6	14	275	365
301281	7	16	330	430
301282	8	18	350	470
301283	10	20	400	540

Tenditori inox AISI 316 – tipo a cannocchiale – con corpo in bronzo speciale, forcella/asta a pressare con cappuccio coprifiletto in nylon nero

Stainless steel turnbuckles, AISI 316 – telescopic type – with special bronze body, fork/swage stud with black nylon thread cover



FORCELLA FORK	SNODATO TOGGLED	FUNE ROPE	A	B	C	D	CAR. ROTT. B. LOAD
301300-A	301300-B	4	7,5	8	8	13	1.680
301301-A	301301-B	5	9	9,5	10	17	2.480
301302-A	301302-B	6	12,6	11	12	18	3.480
301303-A	301303-B	7	14	12	14	22	5.050
301304-A	301304-B	8	16	14	16	23	6.900
301305-A	301305-B	10	17,8	16	18	31	9.400
301306-A	301306-B	12	21,4	18	20	32	13.900

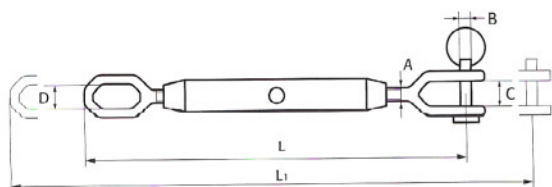


Tenditori UNI2018 e UNI2020, inox AISI 316

Stainless steel UNI2018 – UNI2020 turnbuckles, AISI 316



RIF. ART.	A	B	C	D	L	L ₁	CAR. ROTT. B. LOAD
301320	M6	6,5	8	12	180	270	990
301321	M8	7,5	10	14	216	320	1.900
301322	M10	8,5	12	16	258	375	2.750
301323	M12	10,5	16	20	302	425	4.500
301324	M16	12,5	20	25	355	485	7.000
301325	M20	16,5	24	25	385	525	15.000
301326	M22	20,5	28	30	440	585	19.500
301327	M27	22,5	32	30	468	620	29.000



* Isolatori radio per applicazione sul sartame, inox AISI 316

Stainless steel backstay insulators, AISI 316



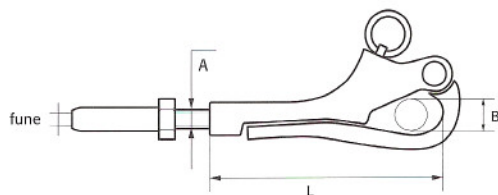
FUNE ROPE	ART. 1	ART. 2	ART. 3	ART. 4	ART. 5
Ø 6	301340	301360	301380	301400	301420
Ø 8	301341	301361	301381	301401	301421
Ø 10	301342	301362	301382	301402	301422
Ø 12	301343	301363	301383	301403	301423
Ø 14	301344	301364	301384	301404	301424
Ø 16	301345	301365	301385	301405	301425
Ø 18	301346	301366	301386	301406	301426
Ø 20	301347	301367	301387	301407	301427

* L'isolatore radio "RISP" permette di utilizzare lo strallo come una potente antenna radio, migliorando notevolmente la ricezione, eliminando ogni disturbo. L'isolatore è stato progettato e costruito secondo criteri di massima sicurezza e di isolamento. Infatti il materiale isolante interno lavora a compressione e non a trazione.

"RISP" backstay insulators enable the backstay to be used as a powerful radio antenna, considerably improving radio reception because all static is eliminated. The backstay insulator has been designed and made to the highest safety and insulation standards. The interior insulating material works by pressure and not by traction.

Tenditore a moschettone per draglia, inox AISI 316

Stainless steel pelican hook - swage turnbuckle for stay, AISI 316



RIF. ART.	A	FUNE ROPE	B	L
301440	M6	4	13	76
301441	M6	5	13	76
301442	M8	4	20	96
301443	M8	5	20	96
301444	M8	6	20	96

Leva di sgancio rapido per tenditori, inox AISI 316

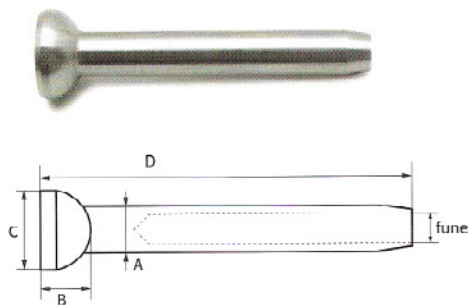
Stainless steel quick release lever for turnbuckles, AISI 316



RIF. ART.	A	L	TENDITORE TURNBUCKLE	FUNE ROPE
301460	8	220	M10	5
301461	10	260	M12	6

Terminali a semisfera, inox AISI 316

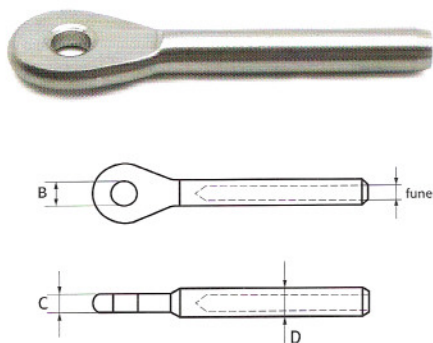
AISI 316 cone-circular rod terminals, AISI 316



RIF. ART.	FUNE ROPE	A	B	C	D
301480	4	8	8	12	65
301481	5	10	10	16	75
301482	6	12	12	20	85
301483	7	14	13	22	96
301484	8	16	16	26	110
301485	10	18	18	28	135

Terminali ad occhio, inox AISI 316

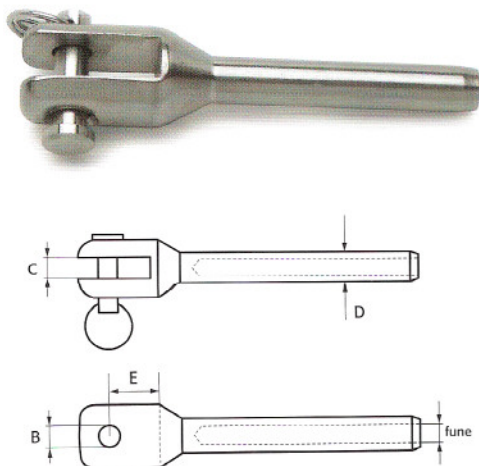
Stainless steel eye terminals, AISI 316



RIF. ART.	FUNE ROPE	B	C	D
301500	2	4	3	6
301501	2,5	5	3	6
301502	3	5	4,5	6
301503	4	6	6	8
301504	5	8	7	10
301505	6	10	8,5	12
301506	7	12	10	14
301507	8	12	10,5	16
301508	10	14	12,5	18
301509	12	16	15	20
301510	14	20	16	26
301511	16	24	18	28
301512	18	28	20	35,5
301513	20	32	22	35,5
301514	22	36	24	38
301515	24	40	26	42

Terminali a forcella, inox AISI 316

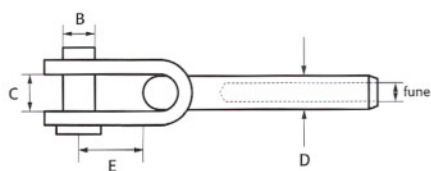
Stainless steel fork terminals, AISI 316



RIF. ART.	FUNE ROPE	C	B	E	D
301520	2	5	4	9	6
301521	2,5	5	5	10	6
301522	3	6	5	11	6
301523	4	8	6	13	8
301524	5	8	8	17	10
301525	6	10	10	18	12
301526	7	12	12	22	14
301527	8	12	12	23	16
301528	10	14	14	31	18
301529	12	16	16	32	20
301530	14	18	20	39	26
301531	16	20	24	42	28
301532	18	22	28	48	35,5
301533	20	24	32	55	35,5
301534	22	26	36	61	38
301535	24	28	40	68	42

Terminali a forcella snodata, inox AISI 316

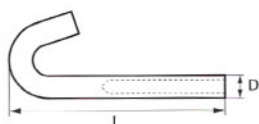
Stainless steel toggle terminals, AISI 316



RIF. ART.	FUNE ROPE	B	C	D	E
301540	4	8	6	8	13
301541	5	10	8	10	17
301542	6	12	10	12	18
301543	7	15	12	14	22
301544	8	15	12	16	23
301545	10	16	14	18	32
301546	12	18	16	20	38
301547	14	20	20	26	49
301548	16	24	24	28	60
301549	18	30	28	35,5	72
301550	20	32	32	35,5	84

Terminali a gancio, inox AISI 316

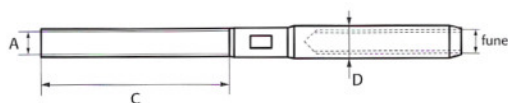
Stainless steel hook terminals, AISI 316



RIF. ART.	FUNE ROPE	D	L
301560	2	6	60
301561	2,5	6	60
301562	3	6	60

Terminali filettati a pressare, inox AISI 316

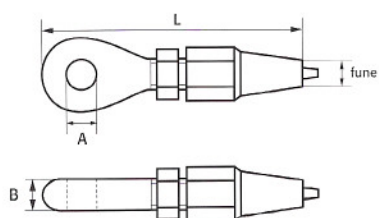
Stainless steel threaded stud terminals, AISI 316



RIF. ART.	FUNE ROPE	A	C	D
301580	3	M6	40	6
301581	4	M8	55	8
301582	5	M10	60	10
301583	6	M12	70	12
301584	7	M14	80	14
301585	8	M16	90	16
301586	10	M18	110	18
301587	12	M20	120	20
301588	14	M22	130	26
301589	16	M24	140	28
301590	18	M27	160	35,5
301591	20	M30	190	35,5
301592	22	M33	220	38
301593	24	M36	250	42

Terminali manuali ad occhio, inox AISI 316

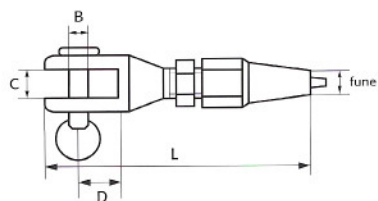
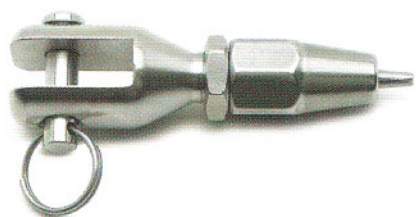
Stainless steel manual swageless eye terminals, AISI 316



RIF. ART.	FUNE ROPE	A	B	L
301600	4	6	5	54
301601	5	8	6,5	63
301602	6	10	8,5	82
301603	7	12	10,5	87
301604	8	12	10,5	90
301605	10	14	13,5	110
301606	12	16	16	140
301607	14	20	18	165
301608	16	24	20	165

Terminali manuali a forcella, inox AISI 316

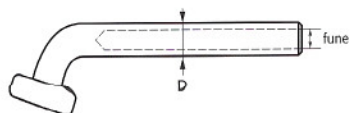
Stainless steel manual swageless fork terminals, AISI 316



RIF. ART.	FUNE ROPE	B	C	D	L
301620	4	6	8	13	56
301621	5	8	8	17	65
301622	6	10	10	18	85
301623	7	12	12	22	90
301624	8	12	12	23	94
301625	10	14	14	31	115
301626	12	16	16	32	145
301627	14	20	18	39	170
301628	16	24	20	42	175

Terminali a martello, inox AISI 316

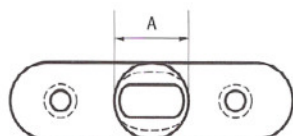
Stainless steel T-terminals, AISI 316



RIF. STANDARD	RIF. SPECIAL	FUNE ROPE	D
301640/A	S-301640/B	4	8
301641/A	S-301641/B	5	10
301642/A	S-301642/B	6	12
301643/A	S-301643/B	7	14
301644/A	S-301644/B	8	16
301645/A	S-301645/B	10	18

Controplacche per alberi per terminali a martello,
inox AISI 316

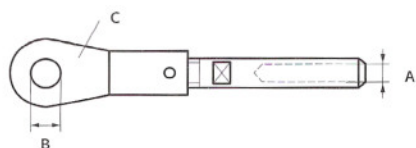
Stainless steel T-terminal back plates, AISI 316



RIF. ART.	FUNE ROPE	A
301680	4-5	26
301681	6-7	31
301682	8-10	37

Terminali ad occhio smontabile per avvolgifiocco,
inox AISI 316

Stainless steel jointed eye terminals for roller jib, AISI 316



RIF. ART.	A	B	C
301700	5	8	7
301701	6	10	8,5
301702	7	12	10
301703	8	14	11
301704	10	16	12,5
301705	12	18	15



Manicotti (Talurit) da Ø2 mm a Ø20, rame e inox

Copper and stainless steel straight splices (TALURIT)
from Ø2 mm to Ø20 mm.



Ammortizzatore per ormeggio idraulico, inox AISI 316

Stainless steel hydraulic mooring shock-absorber, AISI 316



RIF. ART.	PESO BARCA BOAT WEIGHT	D	F	L	PESO WEIGHT
301780	FINO A 20 TON UP TO 20 TON	60	35	410	Kg 2,5
301781	FINO A 35 TON UP TO 35 TON	60	35	410	Kg 3
301782	FINO A 60 TON UP TO 60 TON	90	40	520	Kg 4
301783	FINO A 80 TON UP TO 80 TON	90	40	520	Kg 4,5
301784	FINO A 100 TON UP TO 100 TON	130	50	580	Kg 6

Mollone per ormeggio in acciaio plastificato, inox AISI 316

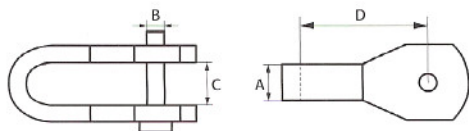
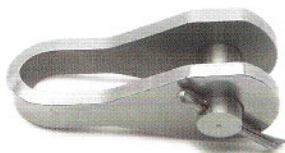
Stainless steel mooring spring on plasticized steel, AISI 316



RIF. ART.	PESO BARCA BOAT WEIGHT	F	D	L	PESO WEIGHT
301800	FINO A 2,5 TON UP TO 2,5 TON	6	50	380	Kg 1
301801	FINO A 7,5 TON UP TO 7,5 TON	8	65	480	Kg 2,5
301802	FINO A 12 TON UP TO 12 TON	10	80	560	Kg 3
301803	FINO A 18 TON UP TO 18 TON	12	100	560	Kg 3,5
301804	FINO A 28 TON UP TO 28 TON	14	120	640	Kg 4,5

Snodi tipo piatto piegato ad "U", inox AISI 316

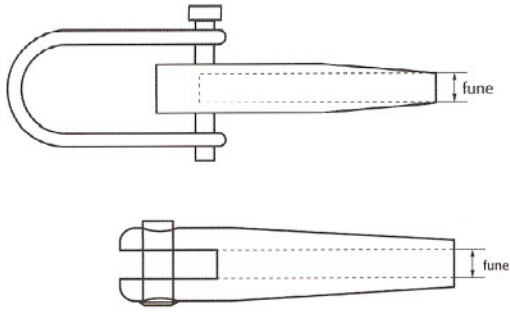
Stainless steel "U" strap type toggle, AISI 316



RIF. ART.	FUNE ROPE	A	B	C	D
301820	5	7	8	10	39
301821	6	9	10	12	48
301822	7	11	12	12	56
301823	8	13	14	15	65
301824	10	15	16	18	75
301825	12	17	18	20	90

**Terminali femmina e maschio per cavo "PARAFIL",
inox AISI 316**

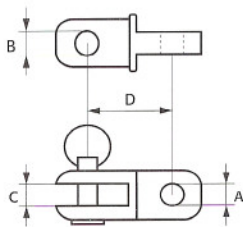
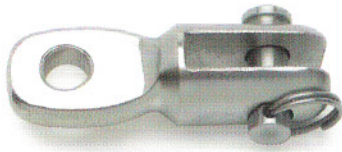
*Stainless steel eye and fork terminals for "PARAFIL" rope,
AISI 316*



RIF. FEMMINA FORK	RIF. MASCHIO EYE	FUNE ROPE
301720	301730	7
301721	301731	9
301722	301732	11

Snodi per tenditori, inox AISI 316

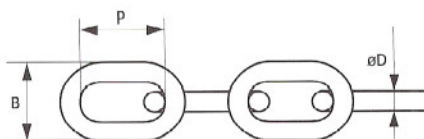
Stainless steel toggles for turnbuckles, AISI 316



RIF. ART.	A	B	C	D
301740	5	4	5	22
301741	6	5	5	22
301742	8	6	8	33
301743	10	8	8	40
301744	12	10	10	45
301745	14	12	12	48
301746	16	12	12	48
301747	18	14	14	65
301748	20	16	16	65
301749	22	20	18	80
301750	24	24	20	95
301751	27	26	20	100

Catena a maglia genovese, inox AISI 304 e inox AISI 316

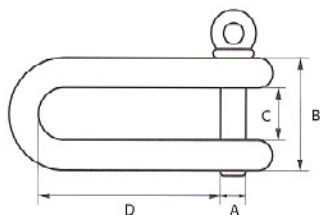
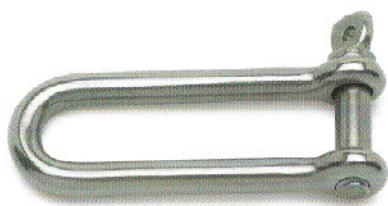
Stainless steel short-link Genovese chain, AISI 304, AISI 316



RIF. ART.	Ø D	B	P	PESO (Kg/m) WEIGHT
301760	1,5	8	14	0,040
301761	2	9	14	0,070
301762	2,2	10	15,5	0,100
301763	2,4	11	17	0,120
301764	3	13	19	0,180
301765	4	16	19	0,300
301766	5	20	21	0,500
301767	6	24	24	0,680
301768	7	28	28	1,000
301769	8	32	32	1,250
301770	10	40	40	2,000

Grillo lungo, inox AISI 316

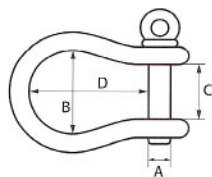
Stainless steel long D-shackle, AISI 316



RIF. ART.	A	B	C	D
301900	5	20	10	22
301901	6	24	12	27
301902	8	32	16	36
301903	10	40	20	45
301904	12	47	24	54
301905	14	57	29	62
301906	16	65	32	72
301907	18	72	38	81
301908	20	80	40	90
301909	22	89	47	99
301910	24	98	50	108
301911	28	112	56	126
301912	30	122	62	135
301913	32	132	68	144

Grilli ad omega, UNI 1950, inox AISI 316

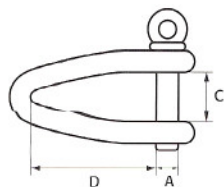
Stainless steel bow shackles, UNI 1950, AISI 316



RIF. ART.	A	B	C	D
301920	5	18	10	23
301921	6	20	12	25
301922	8	25	16	34
301923	10	40	20	47
301924	12	44	24	52
301925	14	52	28	73
301926	16	60	32	83
301927	18	68	36	94
301928	20	75	40	104
301929	22	82	44	115
301930	24	90	48	125
301931	28	95	50	130

Grilli ritorti a 90°, inox AISI 316

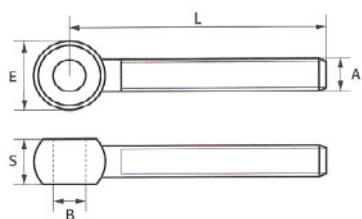
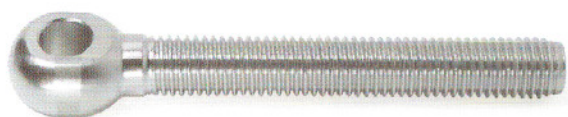
Stainless steel 90° twisted shackles, AISI 316



RIF. ART.	A	C	D
301940	5	10	22
301941	6	12	27
301942	8	16	36
301943	10	20	45
301944	12	24	54
301945	14	28	63
301946	16	32	72

Tiranti ad occhio tipo DIN 444, inox AISI 316

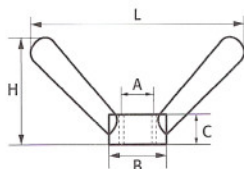
Stainless steel eyebolts DIN 444 type, AISI 316



RIF. ART.	A	B	E	S	L
301840	M10	8	20	12	80
301841	M12	10	24	14	100
301842	M14	12	28	16	110
301843	M16	14	32	18	125
301844	M20	18	39	22	130
301845	M24	20	46	26	190

Dadi a corna tipo UNI 2402, inox AISI 316

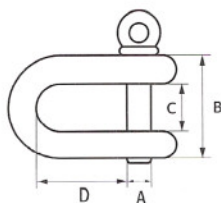
Stainless steel wide wing nuts (long type) UNI 2402, AISI 316



RIF. ART.	A	B	C	H	L
301860	M10	20	10	39	90
301861	M12	24	12	45	105
301862	M14	28	16	51	116
301863	M16	30	18	58	133
301864	M20	35	21	68	153
301865	M24	41	30	88	204

Grillo corto, UNI 1947-48, inox AISI 316

Stainless steel D-shackle, UNI 1947-48, AISI 316

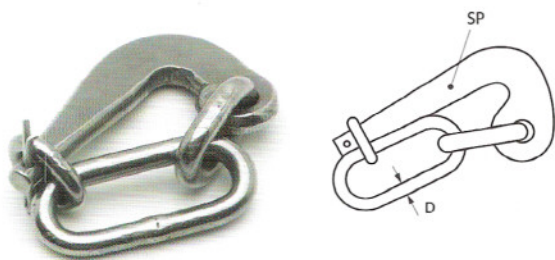


RIF. ART.	A	B	C	D	CAR.ROTT. B. LOAD
301880	5	17	10	14	830
301881	6	20	12	17	1.180
301882	8	28	16	26	2.100
301883	10	34	20	33	3.260
301884	12	40	24	42	4.700
301885	14	46	29	46	6.400
301886	16	52	32	50	8.350
301887	18	58	38	54	10.300
301888	20	64	40	58	13.100
301889	22	72	47	69	16.000
301890	24	80	50	80	19.000
301891	28	90	56	90	25.000
301892	32	102	64	100	33.400



Gancio a scocco, UNI 2503, inox AISI 316

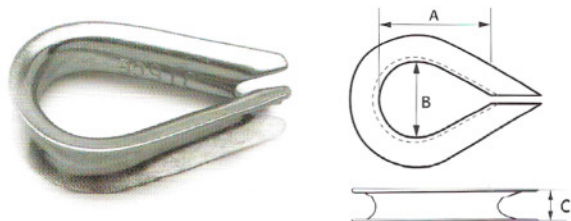
Stainless steel slip hook, UNI 2503, AISI 316



RIF. ART.	D	SP
301960	6	6
301961	8	8
301962	10	10
301963	12	12
301964	16	16

Redance normali, inox AISI 316

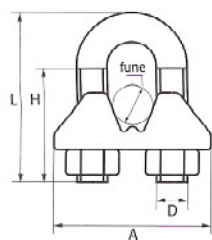
Stainless steel standard thimbles, AISI 316



RIF. ART.	FUNE ROPE	A	B	C
301980	3	13	9	4
301981	4	15	10	5
301982	5	20	13	8
301983	6	23	15	9
301984	8	32	20	12
301985	10	35	25	14
301986	12	50	30	17
301987	14	65	40	20
301988	16	80	43	22
301989	18	96	60	25
301990	20	100	26	60
301991	22	115	28	62
301992	24	125	34	65

Morsetti a cavallotto per fune, inox AISI 316

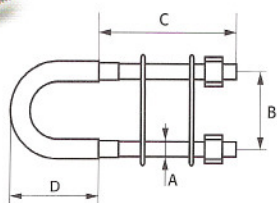
Stainless steel AISI 316 wire rope clips, AISI 316



RIF. ART.	FUNE ROPE	A	H	L	D
302000	3-4	22	12	22	M4
302001	5	24	15	24	M5
302002	6	30	18	33	M6
302003	8	33	20	25	M6
302004	10	37	22	43	M8
302005	12	45	30	54	M10
302006	14	46	30	54	M10
302007	16	53	30	65	M10
302008	18	55	35	80	M12
302009	19-20	58	35	80	M12

Cavallotto con piastrine, inox AISI 316

Stainless steel "U" bolt, AISI 316



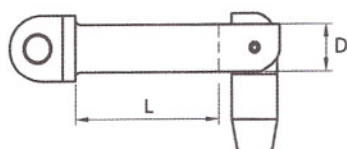
RIF. ART.	A	B	C	D
302020	M6	26	60	34
302021	M8	34	65	40
302022	M10	50	78	50
302023	M12	62	80	60





Perno a snodo UNAV 4255.1, inox AISI 316

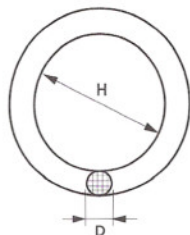
Stainless steel toggle pin with eye, UNAV 4255.1, AISI 316



RIF. ART.	D	L
302040	M6	20
302041	M8	20
302042	M10	25
302043	M12	30
302044	M16	35
302045	M20	40

Anelli tondi, inox AISI 316

Stainless steel round rings, AISI 316

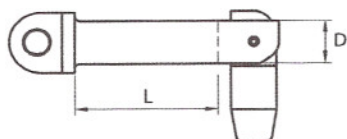


RIF. ART.	D	H
302060	5	25
302061	5	30
302062	6	25
302063	6	30
302064	6	40
302065	8	30
302066	8	35
302067	8	40
302068	10	50
302069	10	60
302070	12	80
302071	14	120
302072	16	140
302073	18	160
302074	20	190
302075	22	240



Perno a snodo UNAV 4255.1, inox AISI 316

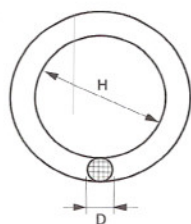
Stainless steel toggle pin with eye, UNAV 4255.1, AISI 316



RIF. ART.	D	L
302040	M6	20
302041	M8	20
302042	M10	25
302043	M12	30
302044	M16	35
302045	M20	40

Anelli tondi, inox AISI 316

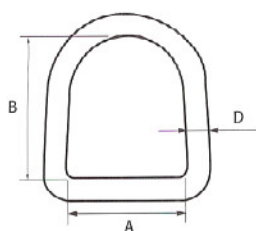
Stainless steel round rings, AISI 316



RIF. ART.	D	H
302060	5	25
302061	5	30
302062	6	25
302063	6	30
302064	6	40
302065	8	30
302066	8	35
302067	8	40
302068	10	50
302069	10	60
302070	12	80
302071	14	120
302072	16	140
302073	18	160
302074	20	190
302075	22	240

Anelli a "D", inox AISI 316

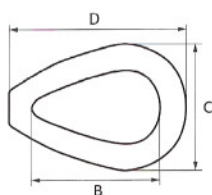
Stainless steel "D" rings, AISI 316



RIF. ART.	D	A	B
302160	10	40	60
302161	12	50	75
302162	14	60	90
302163	16	70	110

Redance chiuse e spessore, inox AISI 316

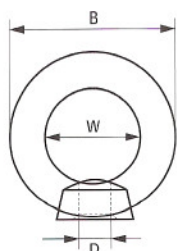
Stainless steel closed heavy-type thimbles, AISI 316



RIF. ART.	FUNE ROPE	B	C	D
302180	6	28	32	43
302181	8	43	41	58
302182	10	50	49	71
302183	12	61	59	86
302184	16	82	75	110

Golfari femmina DIN 582, inox AISI 316

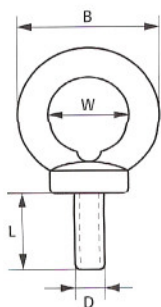
DIN 582 Stainless steel lifting eye nuts, AISI 316



RIF. ART.	D	B	W
302200	M6	36	20
302201	M8	36	20
302202	M10	45	25
302203	M12	54	30
302204	M14	54	30
302205	M16	63	35
302206	M20	72	40
302207	M24	90	50

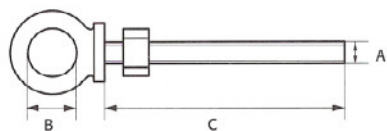
Golfari maschi DIN 580, inox AISI 316

DIN 580 Stainless steel lifting eyebolts, AISI 316



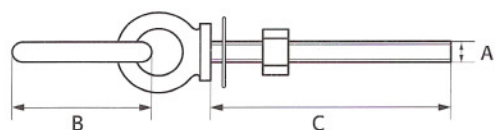
RIF. ART.	D	B	W	L
302220	M6	36	20	13
302221	M8	36	20	13
302222	M10	45	25	17
302223	M12	54	30	20,5
302224	M14	54	30	20,5
302225	M16	63	35	27
302226	M18	63	35	27
302227	M20	72	40	30
302228	M24	90	50	36

Golfari a vite, inox AISI 316
Stainless steel eye bolts, AISI 316



RIF. ART.	A	B	C
302240	M6	12	40
302241	M8	16	60
302242	M10	20	80
302243	M12	24	100

Golfare con anello libero, inox AISI 316
Stainless steel eye ring bolts, AISI 316



RIF. ART.	A	B	C
302260	M6	20	40
302261	M8	30	80
302262	M10	35	100
302263	M12	40	120

